



Salix OS

13.1.2

Start up guide

Table of Contents

1	Salix OS at a Glance	3
2	Starting Up Salix OS	6
2.1	Introduction	6
2.2	Installing Salix	9
2.3	Installing from a Live CD / USB	12
2.4	Installing from a Salix Installation CD	15
2.5	Installing from a Salix Installation USB	18
3	Your Salix	19
3.1	Package Management	19
3.2	Configuring Your Salix	23
3.3	Salix Tools	26
3.4	Salix Live Tools	31
4	Salix Mini Walkthroughs	34
4.1	Working with the Command Line Interface	34
5	Advanced Live CD Options	40
5.1	Advanced Boot Options	40
5.2	Linux Live Scripts	44
5.3	Personalising a Module	45
6	Support	48
7	Appendix	51

About this manual

The purpose of this manual is to enable you to take full advantage of the many functionalities of Salix OS.

The Salix OS start up guide is released under the [CC-BY-SA 3.0](#) license.

1. Salix OS at a Glance



- Salix OS is a [Linux Distribution](#) based on [Slackware](#) that retains full backwards compatibility with its illustrious parent. However, while the [KISS](#) principle that Slackware adheres to refers to the viewpoint of system design, Salix OS also applies it to the viewpoint of the end user.

4

■ **Salix Features**

- ✓ One application per task rationale
- ✓ Fully backwards compatible with Slackware
- ✓ Optimised for desktop usage
- ✓ With Salix tools to assist [system management](#)
- ✓ High quality package repositories with dependency support
- ✓ Simple & fully localised system administration tools
- ✓ Salix artwork
- ✓ Live CD / USB option
- ✓ Supports 32-bit and 64-bit architectures
- ✓ Comes with a complete development environment

■ **Salix Editions**

Salix OS comes in four different editions - **Xfce**, **LXDE**, **KDE** and **Fluxbox**.

The choice is yours: with a *streamlined* Xfce desktop environment, *elegant* KDE 4.4.3 accompanied by a very rich collection of KDE centric software, *minimalistic* Fluxbox window manager or wickedly fast LXDE desktop, all with the Salix look and feel!



For a list of applications available in each Edition, please refer to the later section ([“List of Applications”](#))

5

■ **Installation Modes**

Salix offers three software installation options: **Full**, **Basic** and **Core**, to meet your demands!

Installation Type	Target Users	Features	Examples of Available Applications
Full	All users	<ul style="list-style-type: none">▫ Graphical environment▫ Full software installation	<ul style="list-style-type: none">▫ OpenOffice.org▫ Exaile▫ Firefox / Midori▫ Pidgin
Basic	Advanced users who would like to add their own choice of applications	<ul style="list-style-type: none">▫ Graphical environment▫ Minimum selection of software	<ul style="list-style-type: none">▫ Firefox / Midori▫ Gslapt▫ Desktop
Core	Advanced users who would like to run a console system Server maintainers	<ul style="list-style-type: none">▫ No graphical environment▫ Minimum number of software essential for a console system	<ul style="list-style-type: none">▫ vi

■ **Salix Repositories & Package Management**

- ✓ **slapt-get** and its graphical interface **Gslapt** are used for package management, including **slapt-src** for even wider selection of software to choose from!
- ✓ A wide range of packages from Slackware, Slackbuild and Salix repositories
- ✓ The Salix repositories offer **dependency resolution support** and are the **largest** third party software package repositories for Slackware offered to date
- ✓ The Salix repositories are offered for both the **32-bit** and **64-bit** architectures

■ **In Short, Salix OS is...**

“Like a bonsai, Salix is small, light & the product of infinite care!”

2. Starting Up Salix OS

2.1 Introduction

■ **Downloading Salix OS**

The latest Salix OS or Salix Live releases are freely and easily available as ISO image files from the [Salix OS download page](#).

An ISO image is an archive file of an optical disc. It can be easily rendered or burned to a DVD or CD by using media authoring or disc burning software. The resulting CD must not contain the .iso file; if it does, you have made a mistake in the process.

It is recommended, if possible, to verify the integrity of your downloaded file by comparing its [md5sum](#) file with the original one uploaded besides the corresponding ISO image file by Salix OS. This ensures that your downloaded image file matches exactly with the one provided on the Salix OS website, and minimises the possibility of installation errors later on.

■ **What is a Live CD / USB?**

A Live CD is a CD-ROM holding a self-contained bootable and fully functional operating system. It loads into memory using only the data provided on the CD. It will not modify any operating system or data present on its host computer and will leave no trace after shutdown.

A Live USB flash drive is similar to a Live CD, but it can have the added functionality of automatically and transparently writing changes back to its bootable medium.

Salix Live is the Live CD version of [Salix OS](#). You can therefore safely use it to 'test drive' Salix OS without having to install anything on your computer. You will thus be able to determine whether and to what extent Salix OS is

compatible with your particular hardware configuration and if it suits your personal taste.

If you are fully satisfied with your Live experience of Salix OS, you can then proceed to install it with the help of the Salix Live Installer.

Salix Live will also come in handy as a mobile solution if you wish to carry Salix OS everywhere you go, or if you need to perform some basic rescue operation such as fixing an ailing LILO bootloader with Lilo Setup, configuring some partitions with Gparted, etc.

■ **Creating a Salix Live USB Key**

1. Open the .iso file using a software archiver (file-roller, xarchiver, 7-zip, iso-master, ...).
2. Extract all files and folders (boot, packages and Salix Live) to your USB root directory.
3. Go to the "boot" directory on the USB key.
4. If you're running on Unix (Linux, BSD, Mac OS X), just run the file called "install-on-USB.sh". If you're on Windows, just run the file called "install-on-USB.cmd" instead.

■ **Bootng from a Salix Installation CD/DVD/USB Key**

Your computer must be set to boot on the optical drive / USB port first before defaulting to the internal hard disk drive.

If that is not the case, you need to first modify the [BIOS](#) setting, usually by pressing the Del-key or the F2-key (or some other key combinations depending on your machine). Once in the BIOS, find the "boot menu" or similar and set the order of the boot devices properly, with your optical drive/USB port in the first position. Save your changes and reboot your computer.

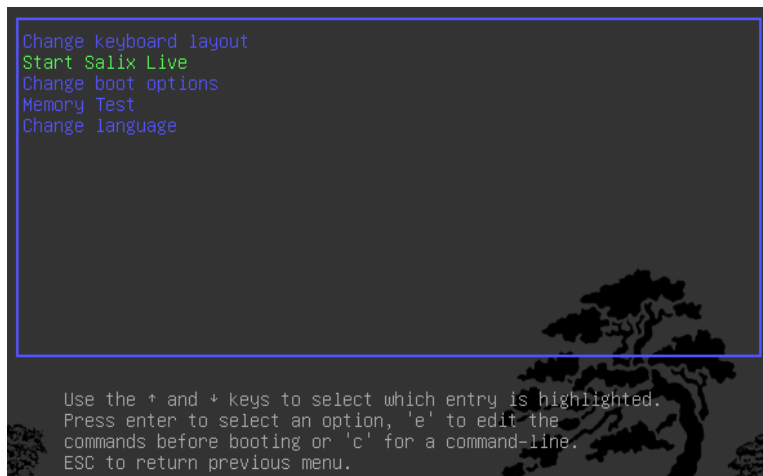
Insert the Salix OS (Live)CD/DVD or USB key, and start up your computer.

■ **Salix Live Boot Menu**

The first screen to greet you will enable you to select your language. Once you have selected your language, simply press on the Enter key to activate your choice.



On the following menu, you will be given the possibility to change your keyboard map if the default one for your language does not suit you.



You also have the possibility to [modify most default boot settings](#).

Simply press Enter on the default menu entry: Start Salix Live and a moment later you will see Salix starting up.

■ **Root Password**

For a system wide change, such as installation of an application, you are required to type in the administrator's password (the “root” or “superuser” password). The password for Salix Live is “**live**” for all the Salix Live editions.

2.2 Installing Salix

■ **Before starting**

Installing Salix OS on your computer is simple. But before starting, it is wise to check the following points:

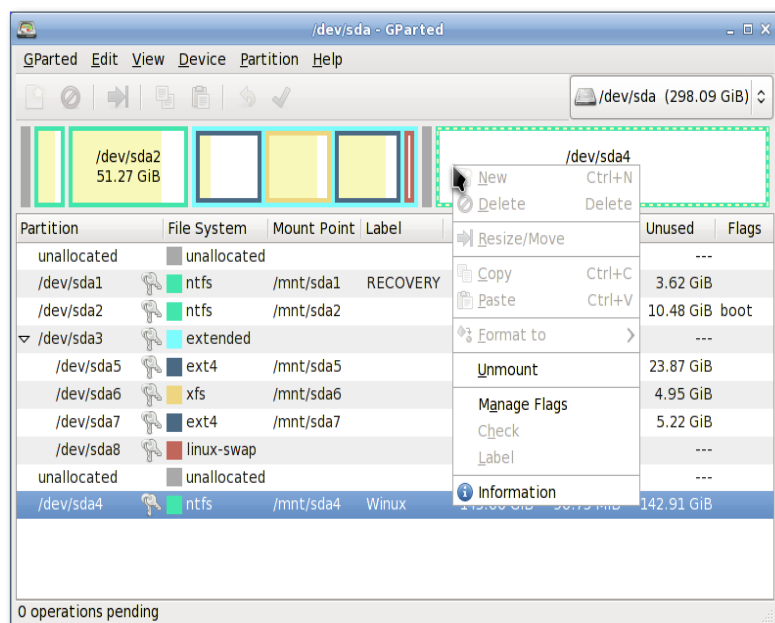
- ✓ Have you backed-up all the important files you have?
- ✓ Check if your computer comes with Linux-friendly/supported hardware*
- ✓ Recommended running specification (Intel PIII 1 GHz, 512 Mb RAM, 8Gb HD space, or equivalent, though a lower spec machine may run without a problem)
- ✓ At least one separate [partition](#) dedicated for Salix on your computer

* Although it is possible to install Linux on a Mac computer, you have to install a bootcamp software called rEFIt beforehand. Certain file systems, such as xfs, cannot be used with a Mac.

The easiest way to check the compatibility of your computer is to use one of the available Salix OS Live editions.

■ **Partition Management**

Before installing Salix (from the live CD or not), you need to have the necessary partition space available on your system, and if the computer does not have a separate partition for Linux, you must create one before installing Salix OS.



It is advisable to back up any important files before modifying the partition table.

Every Salix Live CD comes with [Gparted](#), which will enable you to change the partition organisation on a disk device while preserving the contents of the partitions. You may wish to use this application to create/re-organise your partition table.

Alternatively, if you have an unformatted partition, unallocated disk space, or an existing partition you do not use, you can create or rewrite a new partition table using [cfdisk](#) (which comes with the Salix installation CD).

Both applications are simple to use and require no further explanation on how to use them, except for a small comment about “partition types”.

A hard drive space can be divided into no more than four “primary” partitions, which can be problematic if you are hosting more than one operating system on the same hard drive. A hard drive can, however, be divided into three “primary” partitions and one “extended” partition. The extended partition can then be subdivided into “logical” partitions and hence overcome the limitation set by the “primary partition” (i.e. no more than four partitions). In practice, there is no difference between a logical and a primary partition except for that “Windows” OS cannot be installed on a logical partition.

■ ***So what kind of partitions do you need?***

1. Salix needs, at the very minimum, one partition which holds the root directory and must be assigned as “/” (without the quotation marks).
2. It is highly recommended to have one swap partition. If you already have another Linux OS running on your machine, its swap partition can be shared, and you do not need to create another. A swap partition size is in essence used as an extra RAM to improve the performance of your machine. If, for example, your machine doesn't have a lot of physical RAM or you're performing memory-intensive operations (such as video editing) that use up most or all of the physical RAM. It is normally recommended to have 1.5-2 times the size of your RAM, but for a modern desktop computer with more than a couple Gb of RAM, swap may not be necessary.
3. It is also highly recommended to have one

partition to hold your /home directory, where you can store all your personal data such as documents, photos, customised settings for the desktop environment etc.

4. It is optional to have one partition to hold the /usr directory, where application files are stored (similar to the “Program Files” directory in Windows or the “/Apps” in Mac OS X).
5. Optionally you can create one partition to hold the /var directory, where system log files are stored. But unless you are running a server machine, this is probably unnecessary.

An advantage of having more than one partition to hold separate directories is that you can reformat one partition without affecting others. For example, you can re-install Salix on your machine (and this goes to the partition holding the “/” directory) while leaving the partition holding the /home directory intact.

Each partition can be formatted into one of several [file systems](#). Unless you have a particular favourite for a reason, we recommend you format your partitions with the ext4 file system.

2.3 Installing from a Live CD / USB

Salix Live Installer is found on the Desktop of every Live CD and is very easy to use. Contextual help triggered by the position of the mouse will be displayed above the application and will guide you every step of the way.

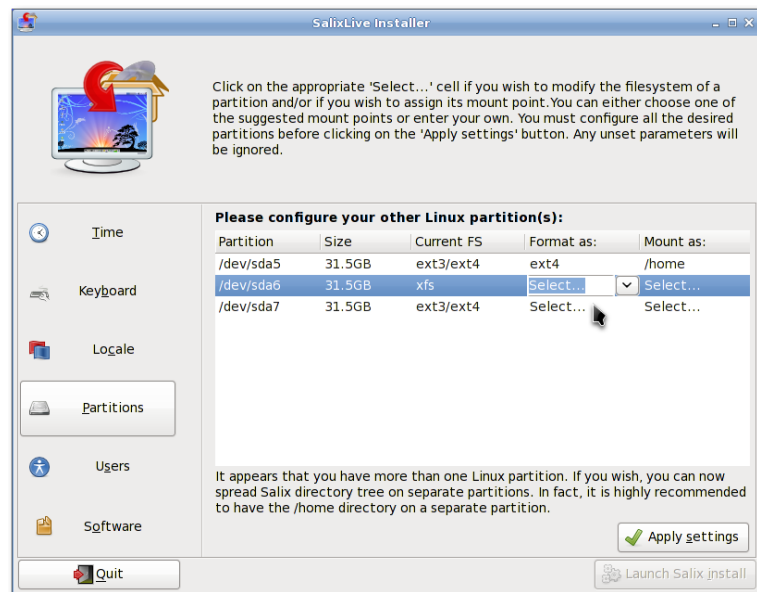
You will be greeted by a reminder that all the necessary partitions have to be created first. As we have seen, this can be done simply with the help of [Gparted](#), which is included in Salix Live and is available directly on the desktop.



On the left side of the application, you will notice the different sections that must be configured before launching the installation process: Time, Keyboard, Locale, Partitions, Users and Software. Clicking on one of these sections will display the corresponding options that need to be set. As you progress through the configuration process, a check will be displayed beside each completed section. Only when all the sections have been completed will the “Launch Salix Install” button be activated.

So do take the time to familiarise yourself fully with Salix Live Installer. Undo options are available and none of the settings will be applied until you click on the “Launch Salix Install” button.

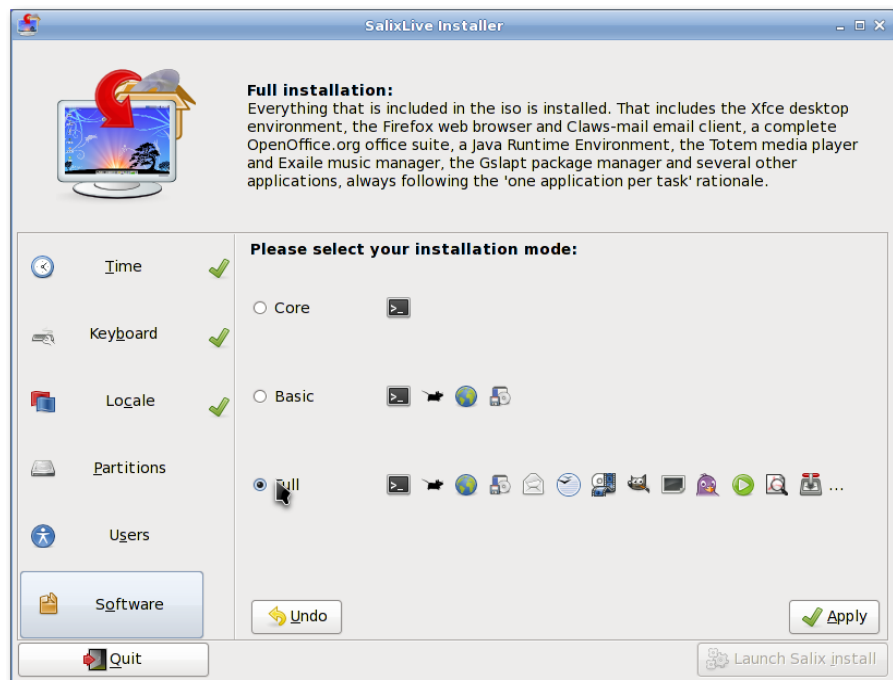
Remember that the existing swap partition will be automatically used by the Live installer without any prompting on your part.



Salix comes with three different installation modes. The Full installation mode includes a range of useful applications one could need on a daily basis while following the "one application per task" rationale, while the Basic Mode provides a user with a graphical desktop environment, a web browser and [Gslapt package manager](#).

This is ideal for advanced users who would like to have the basic desktop environment installed first, and then to add their own choice of applications. The Core Mode installs the minimum software essential for a console system to start (i.e. a graphical environment is not provided). This is ideal if you are an experienced user and love to customise your installation for any specific purpose, such as a web server, file server and so on.

Once the installation process is completed, you will be given the choice to launch [Lilo Setup](#) to configure your LILO bootloader. Most of the time this is what you will want to do although occasionally, it might be preferable not to, for example if you want to use Grub instead or if you want to simply incorporate Salix into an existing bootloader configuration from another distribution in a multiple boot setup.



Lilo Setup is also very easy to use. Contextual help triggered by the position of the mouse will also be displayed above the application and will guide you every step of the way.

Once Lilo is set up, you are good to go! You can re-start your machine, and start enjoying Salix time.

2.4 Installing from a Salix Installation CD

Installing Salix from a Salix Installation CD is very similar to installing Slackware. Everything will be done efficiently in a semi-graphical command line interface.

1. Select your keymap.
2. If you prefer to let Salix do everything including partition management, just select AUTOPARTITION. Note that this will delete everything on the hard drive.
3. Partition management with cfdisk - you can select the hard drive you would like to modify with the arrow keys and the space key.
4. You can create a new partition by selecting a free disk space and choosing **New**. You will be asked to select "primary" partition / "extended" partition first and then set the size. Remember, you can have up to four primary partitions or three primary partition with one extended partition for more partitions. Let's say we want to create one swap partition and partitions for the "/" and "/home" directories.

To create a swap partition, for example, select "primary" partition. Hit enter (for the default starting cylinder), and then type in "+1024M" for 1024 Mb. Choose Type to specify the file system type. Enter **82** (Linux swap).

Let's assume that you have already used up the first three primary partitions, the last one should be made into an "extended" partition as you would still like to create the partitions for "/" and for "/home".

To create an extended partition, select "extended" partition. Hit enter and again hit enter for the default value. This will create an extended partition out of the remaining disk space.

Now select Free disk space from the

extended partition, and create **New**. Create a “logical” partition as you did for the primary partition. Set the size to “+10240M” for roughly 10 Gb. This will be your partition for the root directory (“/”). Select **Type**, and type “**83**” (Linux partition).

Create again a new partition and this time, accept all the default selections. The remaining disk space will be put in this partition. This will be your partition for the “/home” directory. Select **Type**, and type “**83**”.

Select **Write**, and then **Quit** to exit the partition management.

5. Your swap partition will be automatically detected. Say “yes” if the detected partition corresponds to that.
6. You will then be asked to specify the partition for the root “/” directory. Select the partition you have created for the “/”, and continue to format the partition. The ext4 file system is recommended here.
7. If you have other partitions to mount, you can do so. As we have a partition for a “/home” directory, we select the partition and continue. Unless the partition is new or you would like to erase the content of this partition, select not to format.
8. Other partitions such as Windows partitions will be detected automatically. If you would like to make those partitions automatically usable during your Salix session, include them all to mount.
9. The installer will start installing Salix. You will be asked first where the source files are. As you are installing from the CD, select “from the CD”. Everything should be detected automatically.
10. You will be asked to choose an installation mode (**Full**, **Basic** or **Core**).

17

11. Installation of packages will start.
12. After the installation, LILO set up will start up. Unless you are **not** using LILO, choose the default options.
13. You will be asked for some other questions regarding time-zone, user name and root password (superuser / administrator password). When all the basic questions are answered, the machine will restart itself.
14. That's all. The computer is good to go! Enjoy Salix!

2.5 Installing from a Salix Installation USB

Installing Salix OS from a USB key is also possible (but consider installing from a Salix Live USB also). The most difficult part is to know the device name of your USB key. You may wish to issue the command “fdisk -l” as root to know which device is used for your USB key.

1. Create your USB stick with [unetbootin](#)
2. At Salix installation chose "Install from hard disk"
3. Enter the device of your USB stick: This probably is /dev/sdb1 if you only have one hard disk. Please note that a Few sticks are mounted by /dev/sdb instead of /dev/sdb1
4. The next dialog asks where the Salix packages are located on the USB stick. The correct answer here is /salix
5. Installation should continue normally

Alternatively, you can mount your USB key first.

1. After starting up the set up screen, select your keyboard type and exit the setup
2. Type “mkdir /salix” (without the quotation marks)
3. Type “mount /dev/sdb /salix” (sdb can be sdb1, depending on the assignment by your machine)
4. Type setup to restart the installation process
5. When asked for the source file, select “from a local directory” and type in “/salix/salix”
6. Installation should continue normally

3. Your Salix

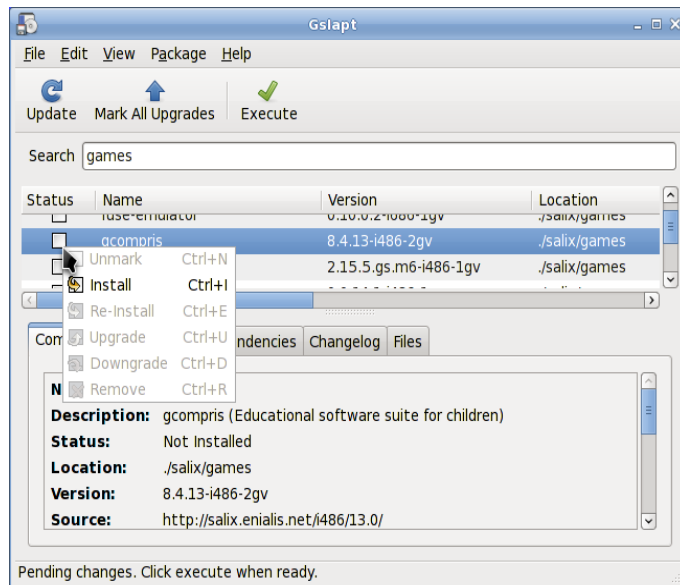
3.1 Package Management

Installing applications (which roughly equates to “installing packages” as we say in Linux) is a fundamental part of the Linux experience. Superficially it is just an exercise using package managers such as Gslapt and its command line equivalent, `slapt-get`, for installing packages created by others. Soon you will start to see some packages you are interested in are not in the common repositories, and you will start creating your own packages. For some, this could be the very first time they see their build scripts working in the terminal, checking for configuration errors and chasing after some missing dependencies to compile a program. Some frustration may hit you initially, but then in good time, you will gather enough experience and as you start to see the inner workings of Linux you will become you more confident.

You have to be the [superuser](#) in order to install an application.

■ **Gslapt**

Gslapt is the GUI version of [slapt-get](#). It allows one to search Slackware/Salix mirrors and third party sources for packages. Before use you should first click on the **Update** button to ensure that the latest updates from the software repositories are known to Gslapt. The search field is there for you to search for a particular package. You can highlight with your left click and choose to install/uninstall/reinstall packages with a right click. Gslapt detects dependencies and will install all the dependency files for a package automatically. Installation/uninstallation/reinstallation will take place once you click on the **Execute** button. You can blacklist packages by adding their names to the blacklist found in “Preferences” under “Edit”.



■ **slapt-get**

[slapt-get](#) is a command line tool for Slackware package management. It allows one to search Slackware/Salix mirrors and third party sources for packages, compare them with installed packages, install new packages, or upgrade all installed packages.

To use the application, open a Terminal window and issue the command “**slapt-get -u**” first to update the package database on your computer. Then “**slapt-get -l**” to list all the available packages, “**slapt-get -search [package name]**” to search for a package, and “**slapt-get -i [package name]**” to install a package. For more command line instructions, please refer to “**slapt-get --help**”.

Here is a little exercise for you. Try installing “w3m” which is a terminal based web browser, by using slapt-get.

■ **slapt-src**

slapt-src is a new command line tool that makes the process of downloading and building software packages from slackbuilds.org simple and easy. Slackbuilds.org keeps a large collection of build scripts for extra packages that are still not available from the official Salix / Slackware repositories. Thousands of extra packages are now available to users through this new tool.

To use the application, type in “**slapt-src -u**” first to update on your computer the list of build scripts available from Slackbuild.org. “slapt-src -l” shows you a list of available

packages, and as in `slapt-get`, “**slapt-src -i [package name]**” will install a package. For more command line instructions, please refer to “**slapt-src -help**”.

Another small exercise for you! Skype is a commonly used software to make voice calls over the Internet. It is not available from the common Salix / Slackware repository, but its build script is available from Slackbuilds.org. Try installing “skype” by using `slapt-src`. (If you do not wish to install it, you may just want to build the package. Note that the skype is 32-bit only, so if you are running a 64-bit system, please try out some other application).

■ **With `spkg`**

An alternative way to install a package (which for Salix and many other slackware based distribution ends with the `.tgz`, `.tlz` or `.txz` extension) is to use the command line input “**spkg -i [exact name of a package]**”. This is a handy way of installing a package if you have just created your own package or if you have downloaded it from the Internet. Note that the name of the package must be exact to the last extension (as in `xxxxx-i486-tt.txz`).

Removing a package is somewhat similar. You can remove a package by issuing “**spkg -d [software name]**”, e.g. “**spkg -d skype**”.

■ **Making a Package from a Source File with `SLKBUILD`**

Installing a software from a source file is in most cases not difficult. You can compile a lot of softwares generally with the following commands.

1. unpack a source file, move inside the folder
2. type in “`./configure`” on the terminal
3. type in “`make`”
4. type in “`make install`”

Although you should manage to install the software after the final command, it is essentially *untracked* and neither `Gslapt` nor `slapt-get` can see that the software is installed. A better way is to create a Salix package using `SLKBUILD`, which is a build script you can prepare before issuing “**slkbuild -X**” to create a Salix compatible package. For more on `SLKBUILD`, please consult [SLKBUILD](#).

- ***Salix Packages, that are different from Slackware***

Although the vast majority of packages found in the Salix repositories are complementary to the Slackware repositories, you will find that some packages are present both in the Salix repositories and in the Slackware repositories. These packages have been rebuilt for Salix OS for a number of good reasons, and a list of the packages as well as brief explanations as to why are found in [this wiki entry](#).

- ***Upgrading Salix OS to a Newer Version***

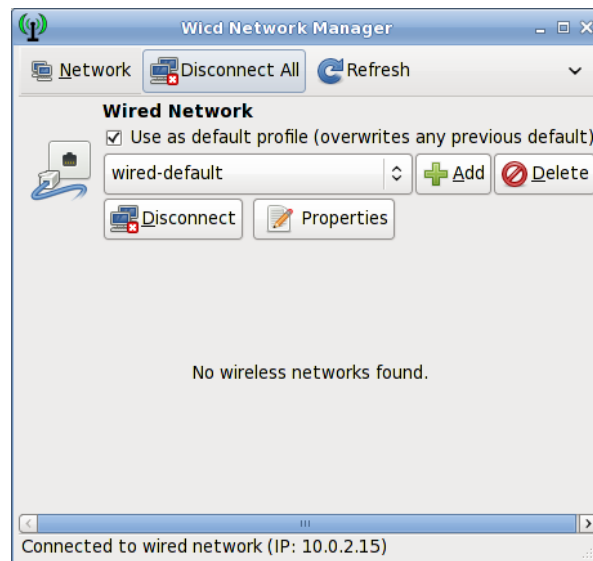
If you wish to upgrade an older version of Salix OS on your machine to the latest, please refer to the following link for upgrading your Salix OS.

- ✓ [Salix 13.0 to 13.1](#)

3.2 Configuring Your Salix

■ *Setting up the Internet*

Network connections are managed by Wicd in Salix. It is an open source wired and wireless network manager for Linux which aims to provide a simple interface to connect to networks with a wide variety of settings.



It will connect to wired (Ethernet only, no PPPoE/DSL support yet) and wireless networks.

Note that **wicd** and **wireless** must be activated in the [startup services](#) in order to make wireless networks visible on Wicd.

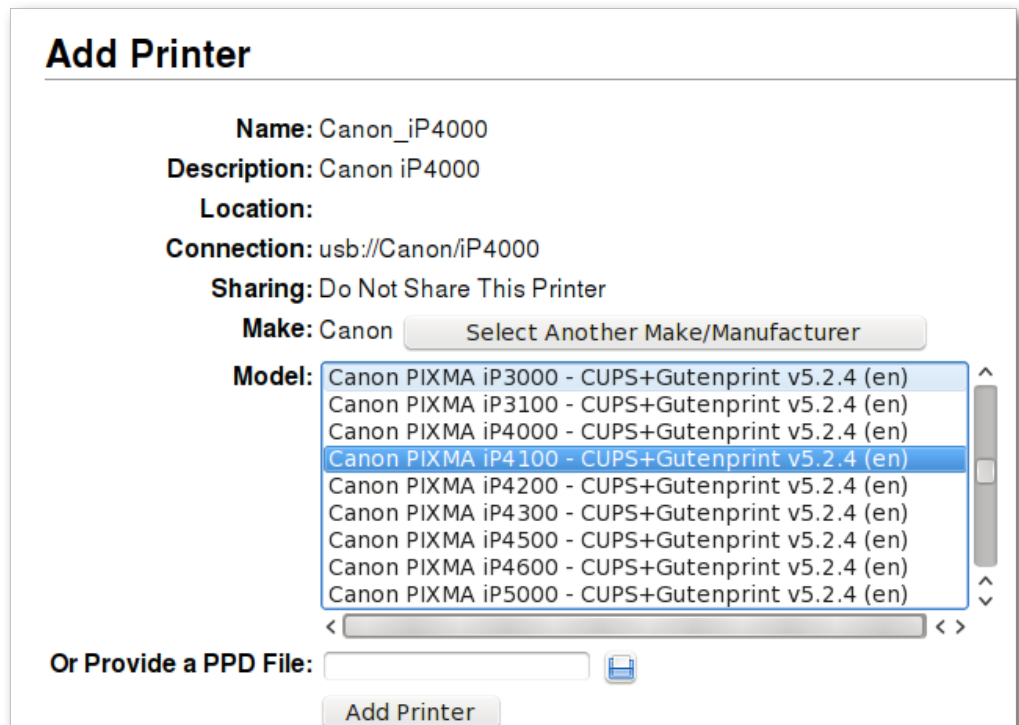
■ *Setting up a Printer*

After writing a document, transferring photos from your camera, or creating your own images with GIMP, you would probably like to print them out with your printer. To do this, you need to have a printer already installed on your system. “**Manage Printing**”, which is found under “System” in the main application menu, handles the installation and general management of your printers. (Ensure that “CUPS” is enabled in the [startup services](#), or Manage Printing will not start properly).

If you are buying a new printer, it is recommended to check the availability of Linux drivers beforehand from the [Open Printing database](#) (or search on the Internet). Some companies offer printer drivers for Linux, but this is less common than desired, and often involves a lengthy installation process. For most Linux friendly printers, you

have to install drivers such as gutenprint and HPIJS, both of which are available from the repositories.

1. Select “Add Printers and Classes”
2. Under “Printers”, select “Add Printer”
3. Enter “root” as a username and your superuser password
4. Select your printer description and choose if you would like to share the printer
5. Select the correct driver from the list (Model) – see an example below. This is the important part. Or if you have a [PPD](#) file instead, you can load it here.



6. Select Add Printer, and finish the process by configuring details of the printer.
7. Now the printer should be usable on your computer

For setting up a network printer, please consult the [Salix wiki](#).

■ **Salix Codecs Installer**

Salix only includes, by default, software that are legally free to use in any country, and that means that proprietary media formats are not configured “out of the box”. Most

commercial DVDs are encrypted, and that means that you need to install certain codecs to view them. This is legally permitted in most countries but not all. Please check and obtain legal advice if you are unsure whether a particular legal restriction applies to a media format and/or packages you wish to use in your country.

Salix codecs installer can be found under “Multimedia” in the main application menu, and conveniently install those codecs to enhance your viewing experiences.

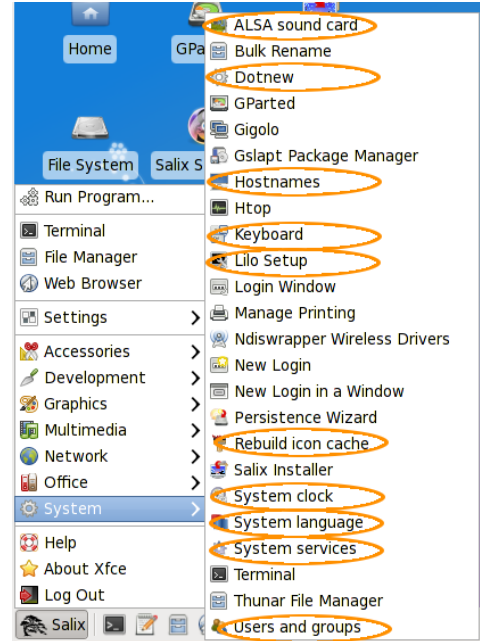
For more information on what is actually installed, please see [here](#).

3.3 Salix Tools

■ **What are the Salix Tools?**

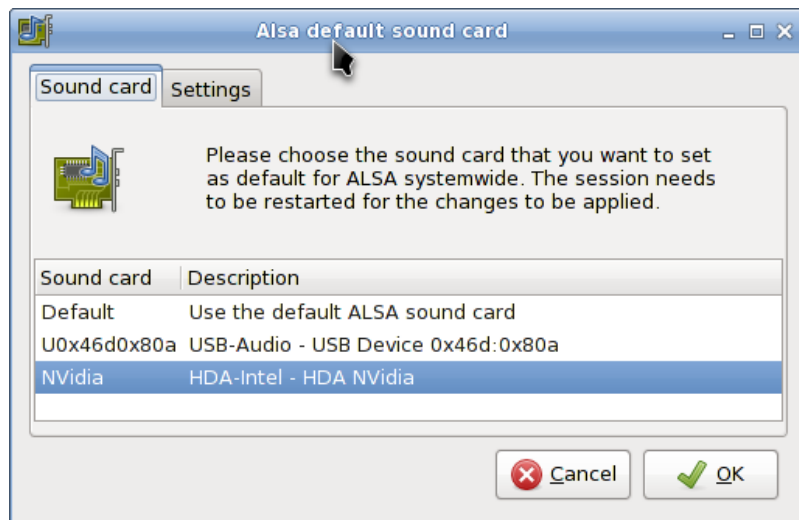
Salix tools are a collection of utilities that are designed to manage every aspect of Salix configuration easily. You can find these tools under the System section of the application menu. Of course, system management in Salix OS can also be done the usual ([manual](#)) Slackware way.

Please note that most Salix tools (except Lilo Setup) have an ncurses counterpart which can be used in a non-graphical environment ([runlevel 3](#)).



■ **ALSA Sound Card**

ALSA Sound Card manages the system sound card configuration. It will display available sound cards in your system and let you select the card you want to use in preference. This is particularly useful when you have multiple sound cards in your system, and you would like to assign a sound card for your system other than the one automatically picked during installation/start-up.

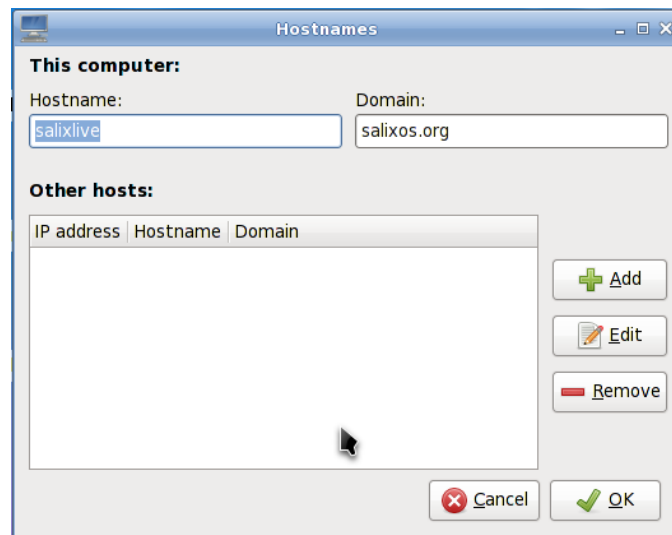


■ **Rebuild Icon Cache**

As the name indicates, Rebuild Icon Cache reconnects some icons that may have become lost after updating your system / installing some new program, and makes them appear again in the application menu.

■ **Hostnames**

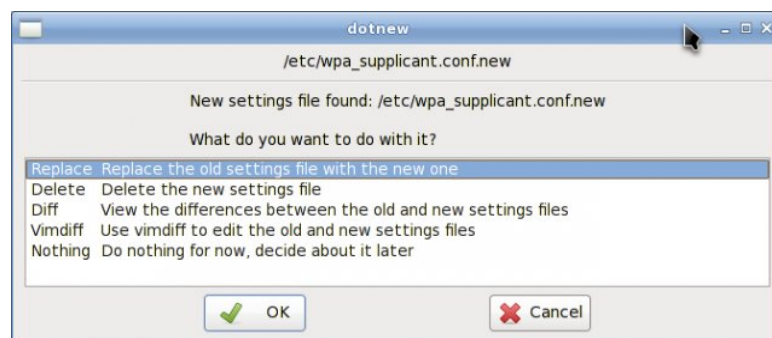
Hostnames manages the host names used by your computer. This tool facilitates defining / overviewing host names used while setting up your machine as a server.



■ **Dotnew**

Dotnew manages the system configuration upgrades used by Slackware. It will display a possible course of action for each new configuration file found in the system.

To execute this utility in runlevel 3, simply type dotnew.

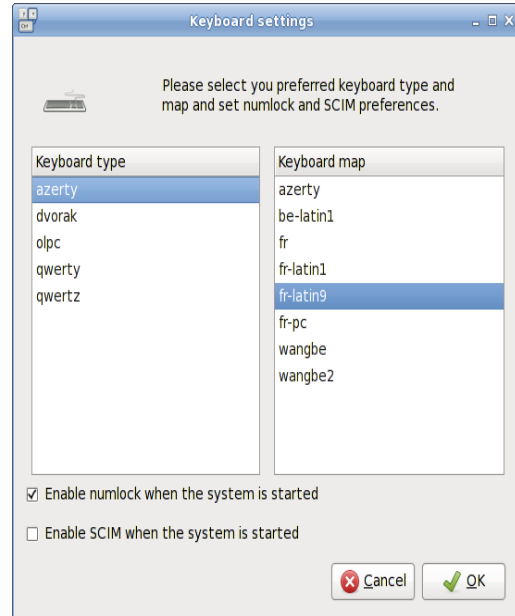


■ **Keyboard Layout**

This utility will configure the keyboard disposition being used both in the graphical and non-graphical environments. Modifications are applied instantly.

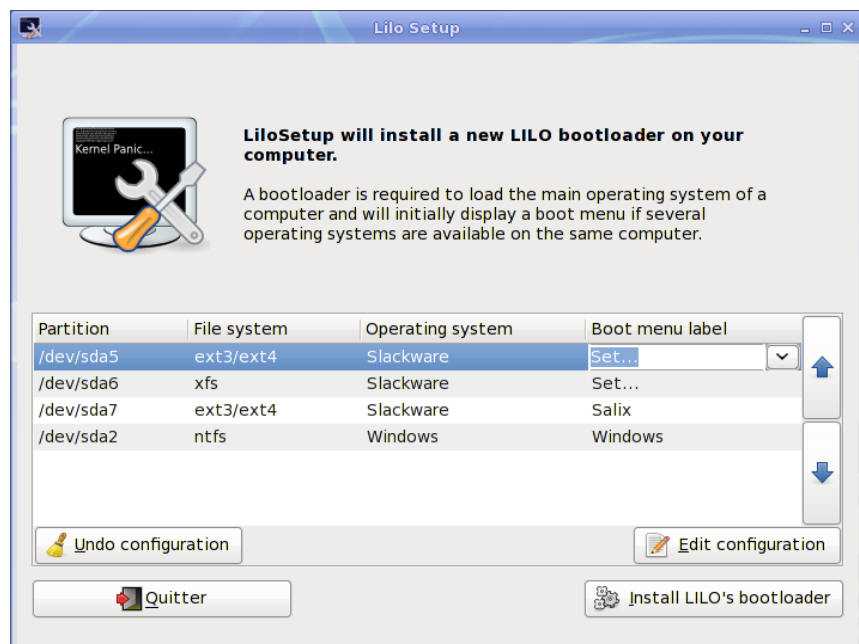
Note that if you would like to activate [SCIM](#) during the start up, you can do so by ticking the optional box.

To execute this utility in runlevel 3, simply type `keyboardsetup`.



■ **Lilo Setup**

Lilo Setup will install a new LILO bootloader on your computer.



A bootloader is required to load the main operating system of a computer and will initially display a boot menu if several operating systems are available on the same computer.

It is necessary to (re)configure the bootloader each time you

install a new operating system on your computer.

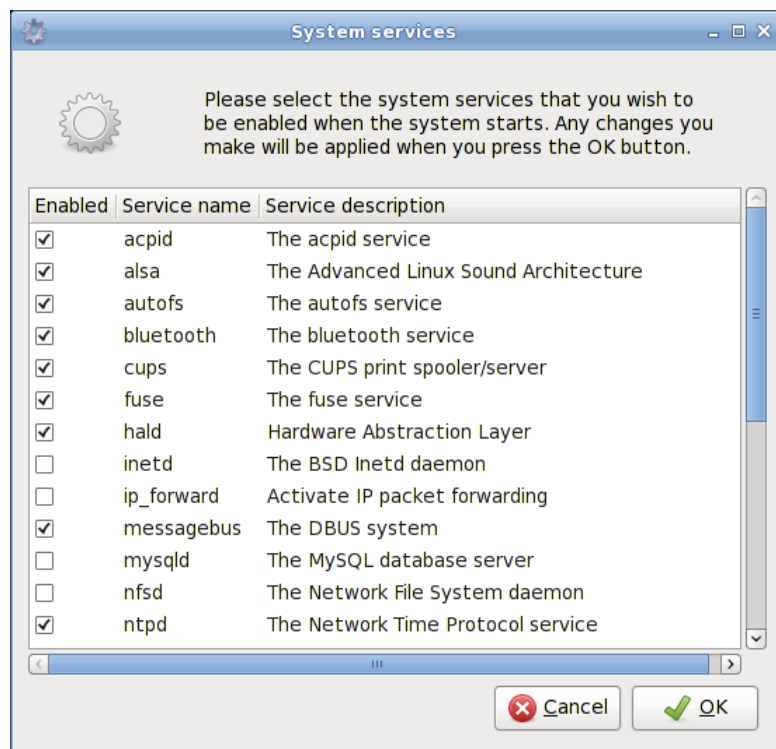
Lilo Setup can also be useful in the process of a disaster recovery, in which case you may have to launch it from a Live CD if you have lost all other means to boot into your system.

■ **Startup Services**

Here you will be able to select the services that should or shouldn't be activated in the background when your system starts.

All your modifications will be applied instantly if you press on the OK button and will not necessitate a reboot.

To execute this utility in runlevel 3, simply type `servicesetup`.



■ **System Language**

This utility will configure the language of your system.

To execute it in runlevel 3, simply type `localesetup`.

■ **System Clock**

This utility will configure your computer clock.

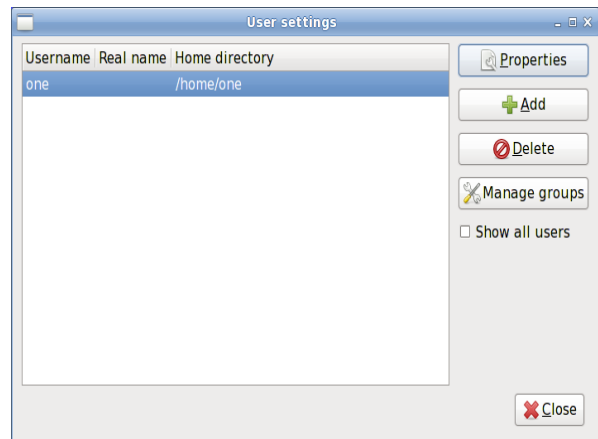
To execute it in runlevel 3, simply type `clocksetup`.

■ **Users Profile**

In Unix/Linux, all users and groups of users are given certain [permissions and access rights](#) to some part of the system in order to control their ability to access and change it.

This utility manages the creation, deletion and properties of all the system users and groups of users.

To execute it in runlevel 3, simply type `usersetup`.



■ **Salix-Update-Notifier**

Salix update notifier is a tool that periodically checks for available package updates and informs the user about them with the display of a non-intrusive tray icon, which can be used to launch the upgrade process with `Gslapt`.



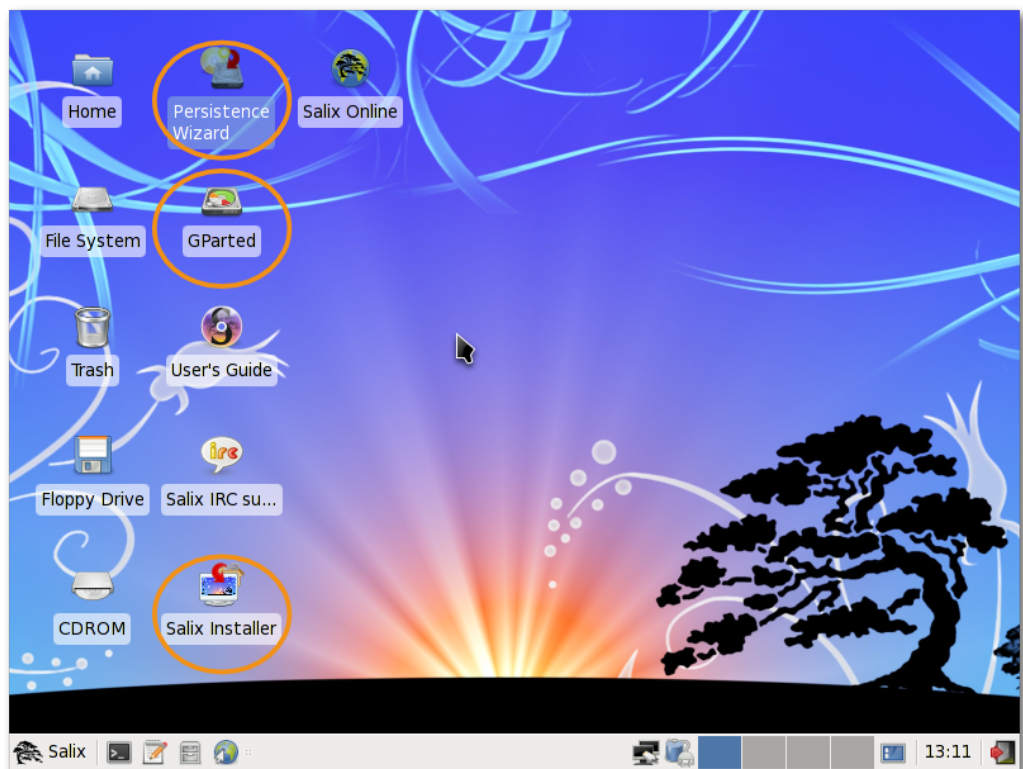
3.4 Salix Live Tools

■ **What are the Live Tools?**

Salix Live comes with all the default [software](#) included in Salix OS.

However, due to its Live nature it also includes some extra utilities which are either needed or simply very useful in a Live session.

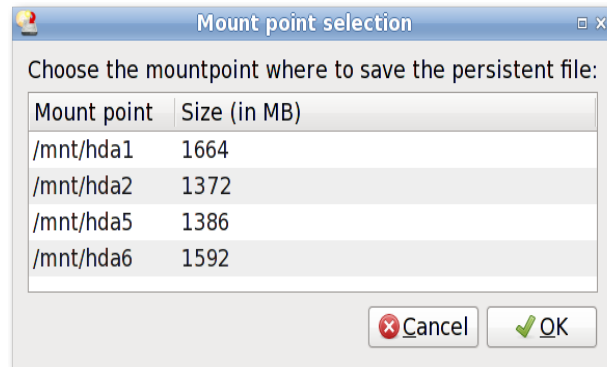
Some of the Live Tools are graphical utilities that can be accessed directly on the desktop while some Live Tools, reserved for advanced users, can only be executed from the command line ([CLI](#)).



■ **The Persistence Wizard**

Even if run from a CD/DVD, Salix Live gives you the possibility to save any of your work or modification performed while in a Live session.

To do this however, you must first create a special "persistence file" on your hard drive, which will have a predecided fixed-size and will be formatted as a Linux file system.



Important! Once this file has been created, it is necessary to reboot the Live CD. From then on, Salix Live will begin to monitor any changes you perform and will record them in the new persistent file.

To remove any changes and come back to the default settings, simply delete the persistent file (slxsave.xfs) from the [mount point](#) it was initially created on.

■ **Gparted**

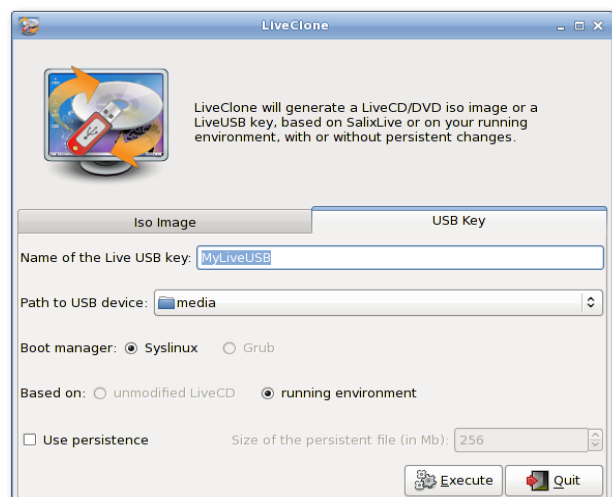
Gparted is included in Salix Live to assist you in [managing your partitions](#) if it is necessary for you to do so before performing the installation of Salix OS.

■ **Salix Live Installer**

Salix Live Installer will enable you to [install Salix OS](#) from the comfort of Salix Live graphical environment.

■ **LiveClone**

LiveClone generates a Live CD/DVD iso image (which you can burn as an image on a CD/DVD with a CD/DVD burner) or a Live USB key. This means that it creates your customized live environment which will be based either on your SalixLive or your running system. In the case of a Live USB



Key generation, you will be offered to make your USB key with “[persistence](#)”.

■ **Linux Live Scripts**

Like most Live CDs based on Slackware, Salix Live relies on the [Linux Live Scripts](#) technology. Some of the shell scripts it includes will enable an advanced user to fully [customize and re-master](#) Salix Live to better suit his or her own needs.

■ **Salix Live Scripts**

In order to bypass certain limitations or to complement some of the third-party technology it uses, Salix developed its own set of patches and scripts which for the most part need no user interaction while some can be executed, for instance to facilitate the creation of a [Salix Live USB Flash Disk](#).

4. Salix Mini Walkthroughs

4.1 Working with the Command Line Interface

This section deals with working in a console mode or with a terminal (such as xfce terminal, xterm, konsole and so forth), and serves merely as a light introduction to what we call "command line interface" (CLI). The intended audience here is not seasoned travellers but new journeymen in the land of Linux, who are willing to discover more about what one can do with it. We will go through some examples in this section for you to follow, and hopefully by the end of this walkthrough, you will have no problem working in the "black screen". For those who would like to know more about CLI, there are a couple of useful resources available on the net, and some are listed in the [Salix Forum](#).

So why learn CLI commands at all? Graphical user interfaces for applications have been steadily improving in Linux, and are probably now comparable to any OS in their ease of use. On the other hand, where Linux excels in particular is in the area of command line applications, its traditional strength. Without the CLI, you would be effectively missing out on half of what Linux can offer, if not more.

There is another reason. From time to time, you might have to work in console. For instance, if the machine fails to start up a graphical desktop environment during booting, then you are more or less forced to fix the problem without GUI.

Of course, there are many other reasons to learn CLI commands, but for now we will start by learning how to move around directories.

First, open up a terminal or move to a console (you can do

this by pressing **Ctrl+Alt+F2**, for example. To get back to the graphical desktop, press **Ctrl+Alt+F4**, for example. F number keys are used to switch between consoles.)

■ **Moving Around - cd**

You should be in your user directory (denoted as "~"), which is normally the same as **"/home/your user name"** (replace the **"your user name"** with your own). In Salix, this directory contains **"Desktop"**, **"Music"**, **"Documents"** and so on. To see its content, type **"ls"** and press enter. You will see something like this:

```
tomoki[~]$ ls
5.png Desktop Download Pictures Templates bbd7ff6e9633a5ab.jpg test.txt
DSC_0061.JPG Documents Music Public Videos salix texlive.sh
```

Now to move around directories, we use **"cd"**. If you just type in **"cd"** and enter, nothing will happen. **"cd"** must be followed either by a name of a directory which is within the directory you are in or by a full path to the directory you wish to move into. You can also go one directory up by typing **"cd .."** (be careful, there is a space between **cd** and **..**). Remember on Linux, *arguments are separated by spaces*. So for now, let's move to the root directory. The root directory is, as the name suggests, the core of your directories - every directory stems from here. Once you wipe out the root directory, you will not see your machine booting up again.

To move to the root **"/"**, type in **"cd /"**.

Type in **"ls"** to see the list of files and directories in the directory. You should see something like **"tmp/"**, **"usr/"**, **"home/"** and so on. OK, not so interesting here. Let us move back to your home directory with **"cd /home/your user name"**.

Now move into the **"Music"** directory by issuing **"cd Music"**. In fact, you do not have to type to the end. By pressing Tab after the first letter or two, you may complete the rest of the directory name automatically.

■ **Creating a Folder - mkdir**

You can create a folder by issuing **"mkdir name of a new folder"**. For example, let's say we are going to create a photo folder. **"mkdir photo"** will place the new folder in the current directory. You can check this by typing **"ls"**.

Next, let's create a log file for the photo folder. **"nano"** is a command line application for reading and writing texts. To

36

bring up the program, type in "**nano**".



```
GNU nano 2.2.4          New Buffer          Modified
log file created

File Name to Write: log
^G Get Help           M-D DOS Format       M-A Append          M-B Backup File
^C Cancel             M-M Mac Format       M-P Prepend
```

The application is simple to use, and you can see command options shown at the bottom. Type "**log file created**", and with **Ctrl+x**, save the document as "**log**" and quit the application.

■ **Copying & Moving & Removing a File - cp & mv & rm**

"**cp**" is perhaps one of the most used commands in a console mode. "**cp**" copies a file or files from one location to another. Since we created the file called "**log**" and it is currently in the wrong directory, let us move it inside the "**photo**" directory. You can do so by issuing "**cp log photo/**" but perhaps it is better to call the log file not just "**log**" but "**log.txt**", so that it would be obvious to a Windows user that it is a text file. Type in "**cp log photo/log.txt**" and enter to execute the command.

You can go inside the "**photo**" directory and check if the copying has been done properly. "**cd photo**" and then "**ls**". The file should be there. Let's add to the log file by saying that it has been moved from "**Music**" to "**photo**". Issuing "**nano log.txt**" will bring up the text. Add a line to say it has been moved, and then save and quit the application by **Ctrl+x**.

Oh, but we forgot to delete the original "**log**" file in the "**Music**" folder. Let's just get back to the "**Music**" directory using "**cd ..**" and remove the "**log**" file by issuing "**rm log**". The "**rm**" command removes a file or files. For example, if you would like to remove all photos with .jpg extension but not with .png, you can issue a command something like: "**rm *.jpg**". This will remove all the files with .jpg extension within the directory you are in. Note that the "**rm**" command will not ask you to confirm your order. It will just carry out

your instructions without further ado and once a file is removed, it is deleted forever. You cannot recover it from the recycle bin.

In this example, we used "**cp**" to copy the log file and then later on deleted it. Normally, this would be done by issuing a "**mv**" command; "**mv log photo/**". You can also use the "**mv**" command to rename a file. Let's say that you did not like the earlier decision to call the log file "**log.txt**" and you now want to rename it as "**log**" again. Type in "**mv photo/log.txt photo/log**" and execute the command. Now the file name has been changed back to "log".

■ **Copying & Moving & Removing a Folder - cp & mv & rm**

So now you have the folder called "**photo**" and a log file in the "**Music**" directory. This is a little strange as we should normally have the folder not in "**Music**" but in "**Pictures**". But now you know how to move a file, perhaps the same command will work for moving a folder?

But... "**cp photo ../Pictures**" (remember that **..** refers to the folder one level up) will give an error like this.

```
tomoki[Music]$ cp photo/ ../Pictures/
cp: omitting directory `photo/'
tomoki[Music]$
```

Let's see what we can do here. The first thing when encountering such a problem is to check the corresponding help file. This can normally be done by issuing a command with an option like "**cp --help**". It is possible that **--help** will just be **-h**, and there may be no help at all. "**man**" is another command if this is the case. "**man cp**" will give a more indepth explanation of this command. (To get out of the manual, press "**q**").

If you read the help carefully, you will see that you need to give an extra option "**-r**" if you wish to copy a folder to another location. So now "**cp -r photo ../Pictures**" should copy the "**photo**" folder inside the correct "**Pictures**" directory. After checking that the folder has been safely copied, you can remove the "**photo**" folder from the "**Music**" directory: "**rm -r photo/**".

■ **Installing a Program - slapt-get and slapt-src**

Maybe a little bird has told you that there is a wonderful application called "**cowsay**" in Linux, and now you would like to see what this program can do.

In order to install a program, one needs to be logged in as root (= superuser = administrator), because it is a system wide action. Alternatively, you can acquire the superuser rights by issuing "**su**". You will be asked to enter the root password. After providing the correct password, you are now free to do whatever you wish to do on your system (even to make the machine unworkable).

So "cowsay". If this is the first time you are installing an application on Salix, the first thing you should do is to update the package database on your computer by executing "**slapt-get -u**". Then to search for an application (in this case, "cowsay"), type in "**slapt-get --search cowsay**". Unfortunately, cowsay is not in the official repositories neither of Salix nor of Slackware. But it is still too early to give up. Slackbuild.org maintains extra packages for Slackware, which of course can be utilised by Salix users.

Search for "cowsay" with slapt-src by typing "**slapt-src --search cowsay**" after first updating the local database with "**slapt-src -u**". You will see that it is available from Slackbuild.org. To install it, execute "**slapt-src -i cowsay**". If you are not sure what this "**-i**" is, you can check it with the **--help** option. You will see a lot of lines running up the terminal quickly until the application is installed.

Once it is installed, you might want to test it. First get out of the superuser mode by typing "**exit**". Then type in "**cowsay**". Nothing happens, and in fact, you will see that you are now in a strange mode that you cannot execute any commands. This is because the application is still running, but as you don't see anything, perhaps it is not running properly. To terminate the process, press "**Ctrl+c**". You will get back the normal input line back on your terminal.

```
tomoki[Music]$ cowsay
^C
tomoki[Music]$
```

So what was going wrong? Check "**cowsay**" with "**-h**". You will see that you need to type in a **[message]**. Try again with "**cowsay Hello Salix!**"

To sum up, we have merely scratched the surface of the power of the command line. The best way to learn more is by using it, but remember to use the help tools, and consult online documentation such as that listed in the Salix forum. Linuxcommand.org can be particularly recommended if you wish to gain a comprehensive grounding. Proceed cautiously, but don't be afraid to experiment.

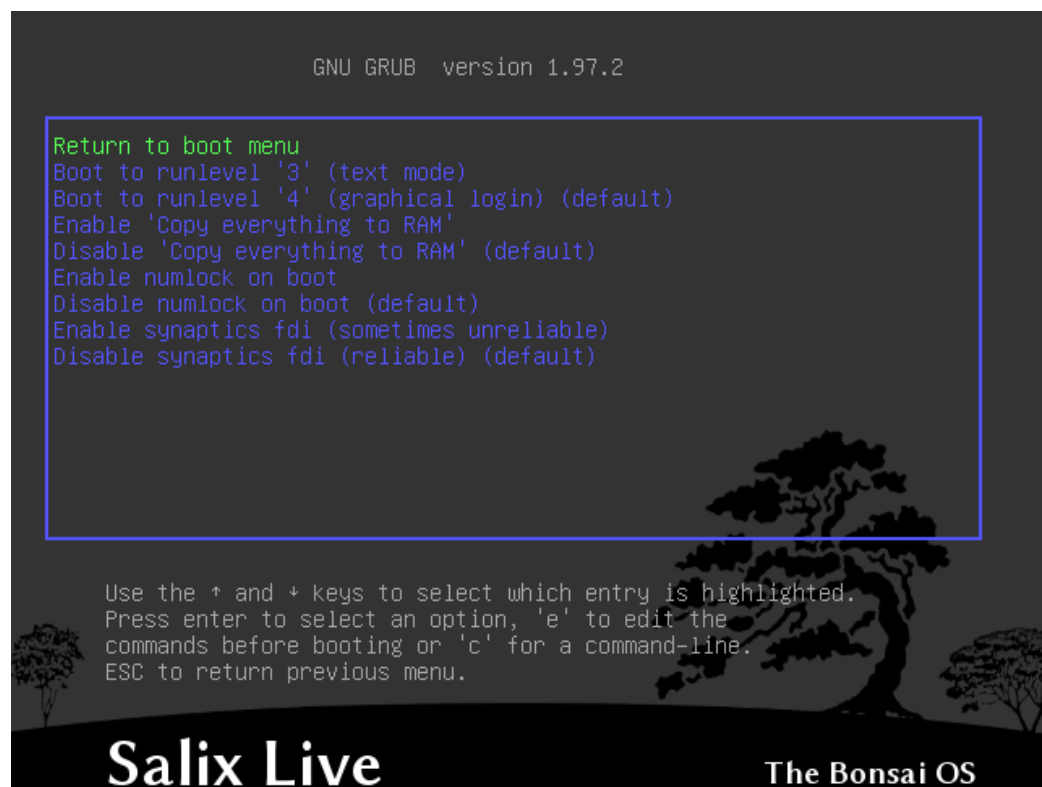
39

A final tip - it can be difficult to copy longer commands accurately. If you select the text with the mouse, in Linux, clicking the middle button or wheel will paste it accurately into the command line or wherever you wish.

5. Advanced Live CD Options

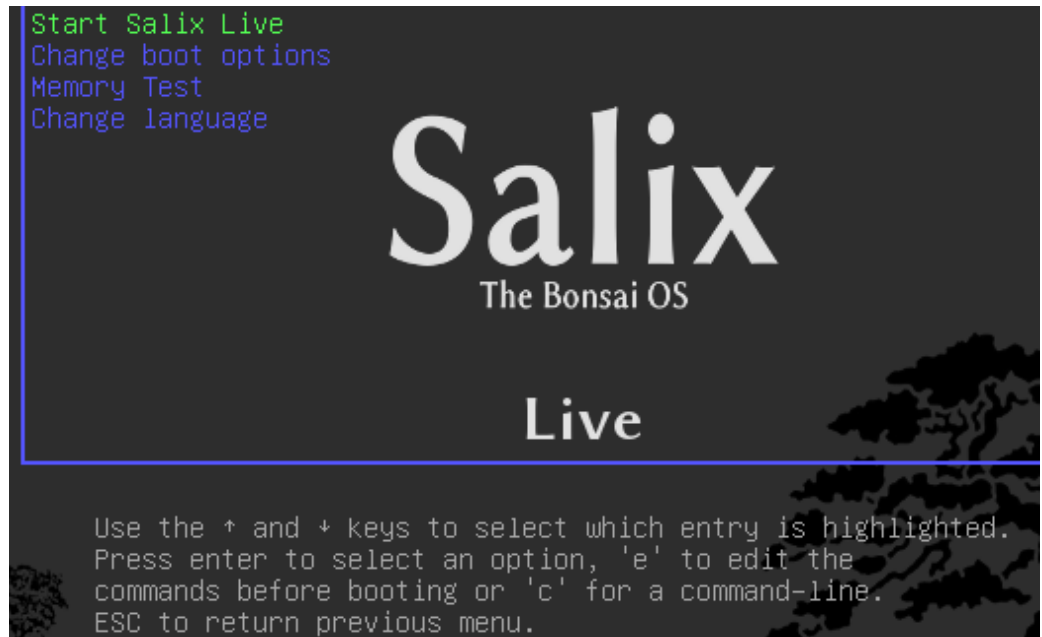
5.1 Advanced Boot Options

By selecting 'Change boot options' on the Salix Live Boot menu, you will be offered a choice of supplementary boot options



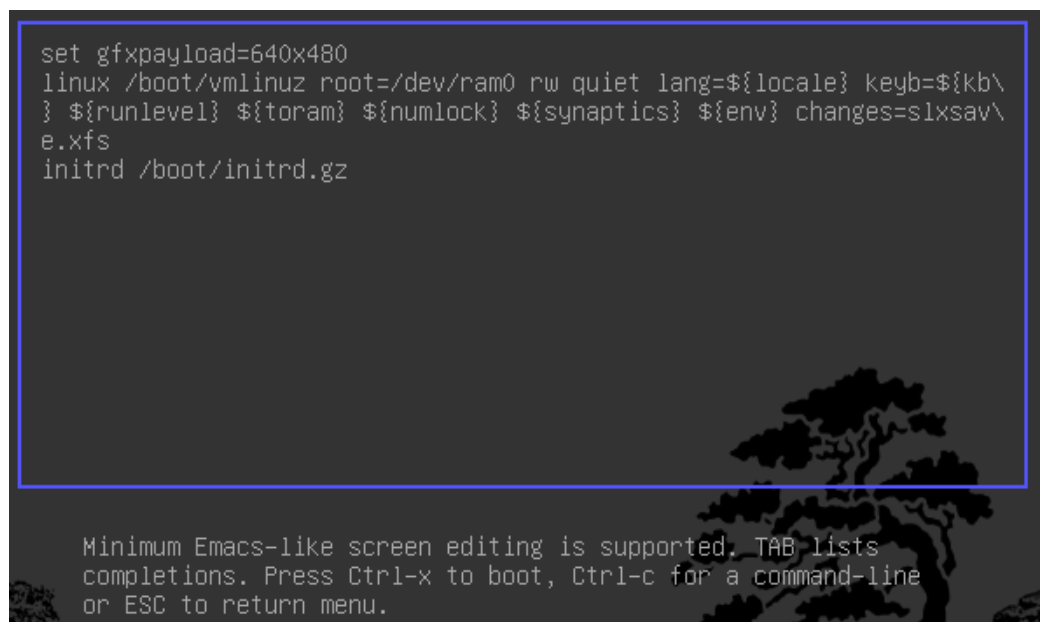
The instructions below the Salix Live Boot menu will give you access to Salix Live 'manual' advanced Boot options.

41



Pressing “**c**” gives you access to the Grub shell. Type help to view all available commands.

Pressing 'e' while 'Start Salix Live' is selected opens up the following display, enabling you to modify some of the booting options, for example, in order to enter a boot parameter.



■ **Boot Parameters**

Booting parameters or cheatcodes, are used to manipulate the booting process of Linux. Some of them are specific to Linux Live Scripts while some are common to all Linux versions. To enter a cheatcode, you simply have to add it to the 'linux' line above (after `changes=sixsave.xfs`), ensuring a blank space separates it from the previous boot parameter.

```
GNU GRUB version 1.97.2

[ Minimal BASH-like line editing is supported. For the first word, TAB
  lists possible command completions. Anywhere else TAB lists possible
  device/file completions. ESC at any time exits. ]

sh:grub> _
```

■ **Useful Boot Parameters**

To load in console only without executing Xorg (runlevel 3)

3

To load Salix Live from a different location than the boot device:

from=/dev/device/salixlive-version.iso

from=path/to/salixlive-version.iso

from=path/to/exploded/salixlive-version.iso

To set root's password to "somepass", or ask for a new password:

passwd=somepass

passwd=ask

To load optional modules from /optional/ directory on the CD:

load=module

(You can use the full module name (module.lzm) or you can skip the extension.)

To safeguard all changes made in a Salix Live session:

changes=file

changes=/dev/device

changes=/dev/device/file

changes=/path/

changes=/path/file

changes=/dev/device/path/

(This cheatcode is already included in Salix Live boot menu and the Persistence Wizard can assist you in creating a persistent file that will be automatically managed by Salix Live.)

To enable debug mode:

debug

(Starts bash several times during boot. Press Ctrl+D to resume booting)

5.2 Linux Live Scripts

The Linux Live Scripts come with the following useful commands:

Adding/Removing modules on the fly:

/usr/bin/activate

/usr/bin/deactivate

Make a module out of a directory:

/usr/bin/dir2lzm

Explode a module to a directory

/usr/bin/lzm2dir

Make a module out of a package:

/usr/bin/tgz2lzm

/usr/bin/txz2lzm

5.3 Personalising a Module

■ **Creating a module**

1. Create a working directory

```
mkdir -p /mnt/hdxx/directory1
```

2. Install all software packages using this directory as root:

```
installpkg --root=/mnt/hdxx/directory1  
packagea-x.x.x.txz
```

```
installpkg --root=/mnt/hdxx/directory1  
packageb-x.x.x.txz
```

```
installpkg --root=/mnt/hdxx/directory1  
packagec-x.x.x.txz
```

etc.

3. Remove all unneeded files:

```
rm -rf /mnt/hdxx/directory1/usr/doc/*
```

4. Make any modifications you want:

```
echo "whatever" >  
/mnt/hdxx/directory1/foo/bar
```

5. Build the module:

```
cd /mnt/hdxx/  
dir2lzm directory1 module1.lzm
```

■ **Customizing a module**

You can fully customize the content of a module by removing or adding applications and by deleting, editing or adding new files inside it.

1. Create a working directory:

```
mkdir -p /mnt/hdxx/directoryx
```

2. Open up the module you want to customize under the working directory:

```
lzm2dir /mnt/hdc/salixlive/base/modulex.lzm  
/mnt/hdxx/directoryx
```

(TIP: You can check that the module contains the unwanted packages by listing the `/mnt/hdxx/directoryx/var/log/packages/` directory.)

3. Remove the packages from the working directory:

```
R00T=/mnt/hdxx/directoryx removepkg packagex
R00T=/mnt/hdxx/directoryx removepkg packagey
R00T=/mnt/hdxx/directoryx removepkg packagez
etc.
```

4. Install new packages to the working directory:

```
installpkg --root=/mnt/hdxx/directoryx
package1-x.x.x.txz
installpkg --root=/mnt/hdxx/directoryx
package2-x.x.x.txz
installpkg --root=/mnt/hdxx/directoryx
package3-x.x.x.txz
```

5. Rebuild the module:

```
cd /mnt/hdxx/
dir2lzm directoryx modulex.lzm
```

6. Replace the original module with your new module, rebuild the ISO image and return the CD.

■ **Which module contains application XXX?**

By browsing `/mnt/live/memory/images/xxx.lzm/`, you can view the contents of each module, therefore you'll find which module holds a given package in `/mnt/live/memory/images/xxx.lzm/var/log/packages/`

■ **Adding files to Salix Live**

Sometimes all you want to do is add a couple files to Salix Live, for example specific configuration files. In that case it is not necessary to create or modify a module.

Salix Live CD holds a `/salixlive/rootcopy/` directory. The content of this directory is copied to the root filesystem each time you boot, preserving all directories.

So, for example, if you wish to just use your own `xorg.conf` file, create `etc/X11/` directories inside of `/salixlive/rootcopy` and store your `xorg.conf` in it. Note that you need to recreate the full directory hierarchy for the patches to work as desired.

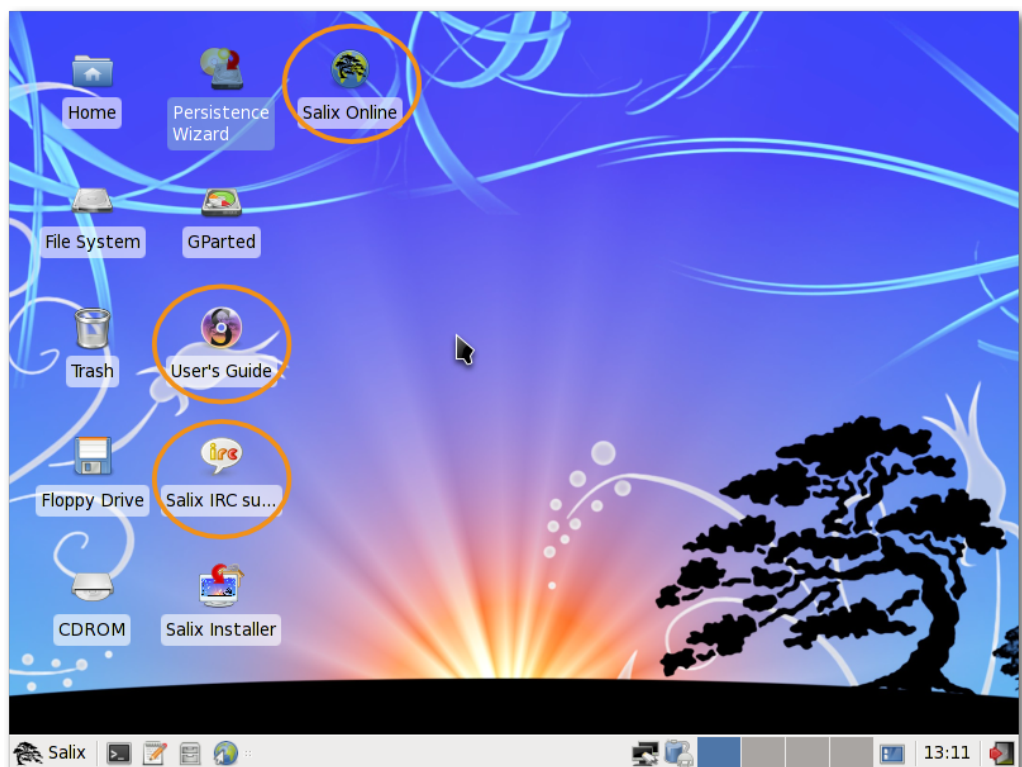
■ **Modify Salix Live ISO**

To remaster Salix Live, you could simply use the program `Isomaster`. You must open an ISO file of Salix Live (for example the one you downloaded) and then add to and/or

remove from the modules situated in */salixlive/base*, */salixlive/modules* or */salixlive/optional*. Once you are done, save the modified ISO to your hard drive and use Brasero to burn it on a CD-ROM.

6. Support

If you are still quite new to either Salix, Slackware or even Linux in general, then you should first of all take some time to study Salix Startup Guide, as it is specifically intended to be accessible to newcomers. The desktop link, Salix Online, will bring you to the Salix [Homepage](#). You could also use the [IRC link](#) above to be in live communication with members of the community and get instant help if necessary. If you do however, you might want to modify the default `qwebircxxx` login to something more personal and human readable.



We hope that the information here will allow you to get Salix up and running fairly straightforwardly, to begin exploring its potential, and above all to use it for what you want to do. Nonetheless, sometimes you may not know how to do something or be able to make it work.

While Salix aims to be elegant and intuitive, every operating system has its own characteristics, and if you are new to Linux, the sheer fact that it is different means there will inevitably be a process of adaptation (see Linux is [Not Windows](#)), even where its very best features are concerned. The only way to climb the learning curve is by trying things out and using them. The more you explore Salix, the quicker you will become familiar with it. However, it is worth emphasising that the default set of applications (they vary depending on the version of Salix you choose, see [List of Applications](#)) include many that have a very similar look and feel to those found on other operating systems, such as the office suite OpenOffice, which offers full compatibility with common file formats.

Our [Wiki](#) and [Forum](#) will be two other important sources of information. The search option of the forum will quickly show you if the question you have in mind has already been posted by a member of the community and if it has been answered. Please, search first. If you are working on the command line ([Working with the Command Line Interface](#)), remember to consult **man** (and try **man salix** for a summary of key points specific to this distribution). There are several online forums devoted to Linux, such as www.linuxquestions.org. It should be noted that each forum has its own subculture, and sometimes explicit posting guidelines. If you post a query to a forum, bear [Paul Grice's conversational maxims](#) in mind: for instance, be as specific as possible and mention any information you have already found out. To put it another way, remember you are consulting a human community, not an interactive online encyclopedia; it is a conversation, something which can be easily lost sight of online.

Forums are a concrete example of one of the qualities at the heart of Linux, which is that it is community-based. Rather than being a commercial product, in almost all cases it is developed by enthusiasts collaborating together for the sheer delight of making good software. This community extends out into the users of the distribution on its forums. Even if you just want to use core office, multimedia or network applications productively, over time the power that Linux gives users tends to promote self-reliance and an ability to configure and fix their computer setup independently. The same approach underlies the development of Linux as an operating system – where there is room for improvement, someone will dive in and tinker. The cumulative result is that Linux today is highly usable out of the box.

The best way to learn Linux is by using it to the full, finding out in the process how to make it do exactly what you want. After a while, though, it may be helpful to supplement this experience with some more systematic background. As mentioned in the section introducing the command line, the [Documentation](#) board on the Salix forums contains a useful post on [tutorials and guides](#). Wherever you find problems recur, it may be worth reading up on the underlying issues over time to gain broader knowledge, especially when it comes to general features of Linux that may be unfamiliar to you, such as file permissions.

Some users may face problems at the very beginning with peripherals or the network. This can seem daunting if you are also adapting to a different operating system at the same time. Explore the options under Menu/System carefully. If difficulties persist, with judicious use of the information and help in the wiki and forums, you should hopefully get the essentials set up as you wish reasonably quickly; then you will be able to take Linux at your own pace.

7. Appendix

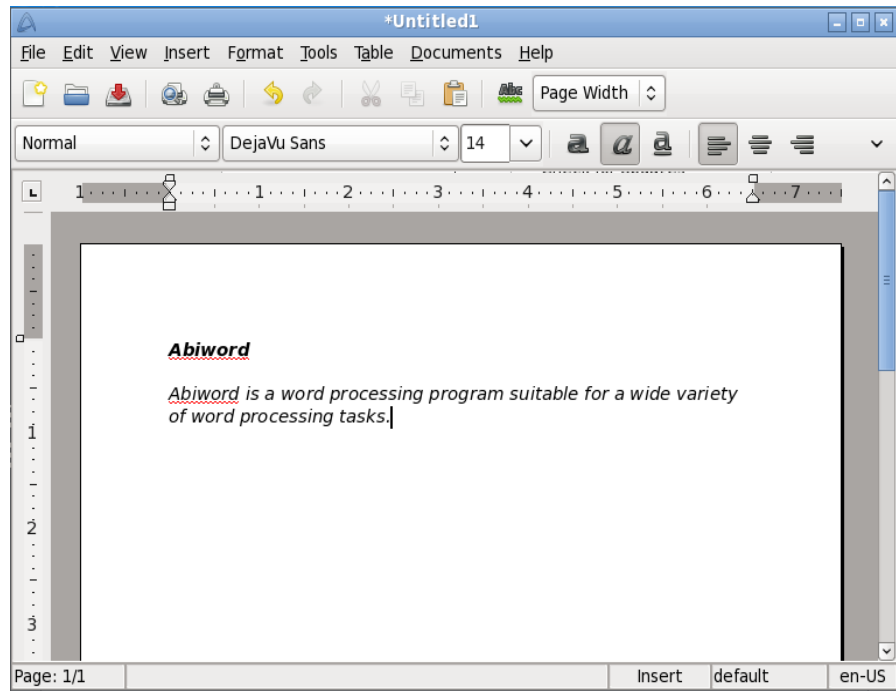
■ *List of Applications*

	Salix	Salix KDE	Salix Fluxbox	Salix LXDE
Web Browser	Firefox	Konqueror	Firefox	Midori
Word Processor	OpenOffice.org Writer	KWord	OpenOffice.org Writer	AbiWord
Email Client	Clawsmail	KMail	Clawsmail	Clawsmail
Picture Viewer	Viewnior	Gwenview	Viewnior	Viewnior
Image Editing	GIMP	Krita KolorPaint Karbon14	GIMP	mtPaint
Video Editing	PiTiVi Video editor	—	—	—
File Manager	Thunar	Dolphin	PCMan	PCMan
Window Manager	Xfce	KDE	Fluxbox	LXDE
Instant Messaging	Pidgin	Kopete	Pidgin	Pidgin
VoIP	—	—	—	—
Spreadsheet	OpenOffice.org Calc	KSpread	OpenOffice.org Calc	Gnumeric
Text Editor	Mousepad	KWriter	Leafpad	Leafpad
Integrated Development Environment	Geany	—	Geany	Geany
Pdf Reader	Document Viewer (Evince)	OKular	Document Viewer (Evince)	ePDFViewer
Multimedia Player	Parole Media Player	Kaffeine	Whaawmp	Whaawmp
Music Player	Exaile	Clementine Music Player	Exaile	Exaile
Disk Burner	Brasero Disk Burning	K3b	Brasero Disk Burning	Brasero Disk Burning
CD Ripper	Asunder CD Ripper	K3b	Asunder CD Ripper	Asunder CD Ripper
Torrent Client	Transmission	KTorrent	Transmission	Transmission
Blogging Client	—	Blogilo	—	—
Organiser	Orage	KOrganizer	—	—
PIM	—	Akonadi	—	—
Desktop Wiki	zim	KJots	—	—
Multilingual Input	SCIM	SCIM	SCIM	SCIM
Terminal Emulator	Xfce Terminal	Konsole	urxvt	LXTerminal
Package Management	Gslapt	Gslapt	Gslapt	Gslapt

■ Selected Applications found in Salix

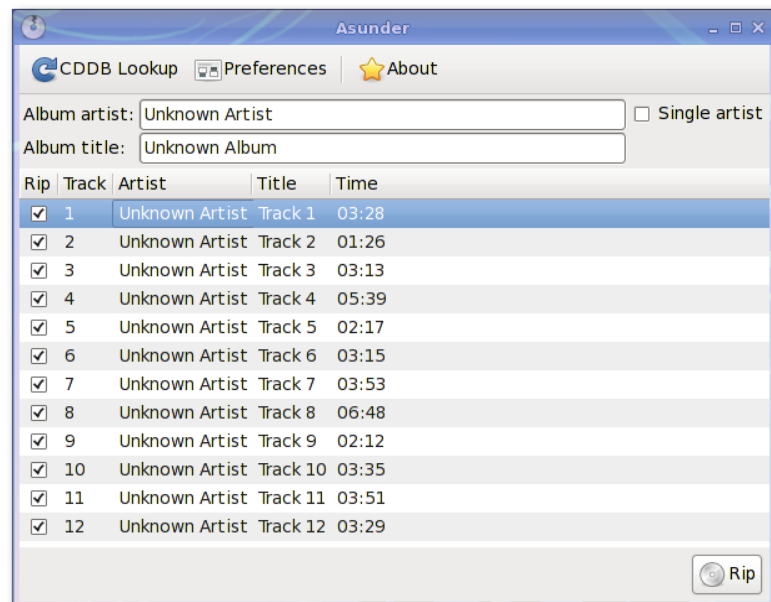
Abiword

AbiWord is a word processing program suitable for a wide variety of word processing tasks.



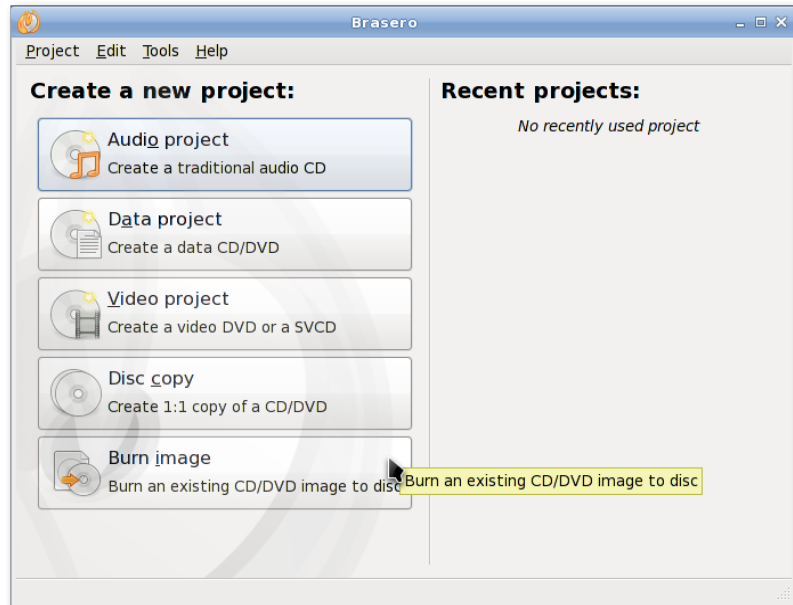
Asunder

Asunder is an Audio CD ripper and encoder for Linux. You can use Asunder to save tracks from an Audio CD as any of WAV, MP3, OGG, FLAC, WavPack, Musepack, AAC, and Monkey's Audio files.



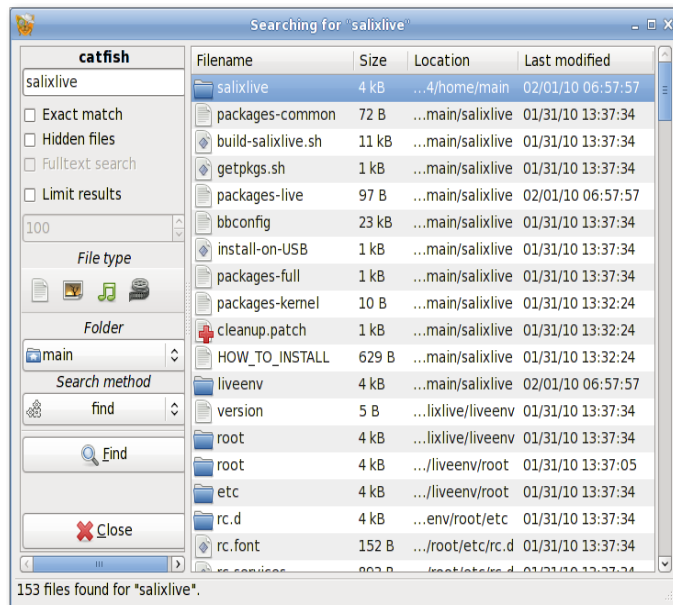
Brasero

Brasero is an application to burn CD/DVD. It is designed to be as simple as possible and has some unique features to enable users to create their discs easily and quickly.



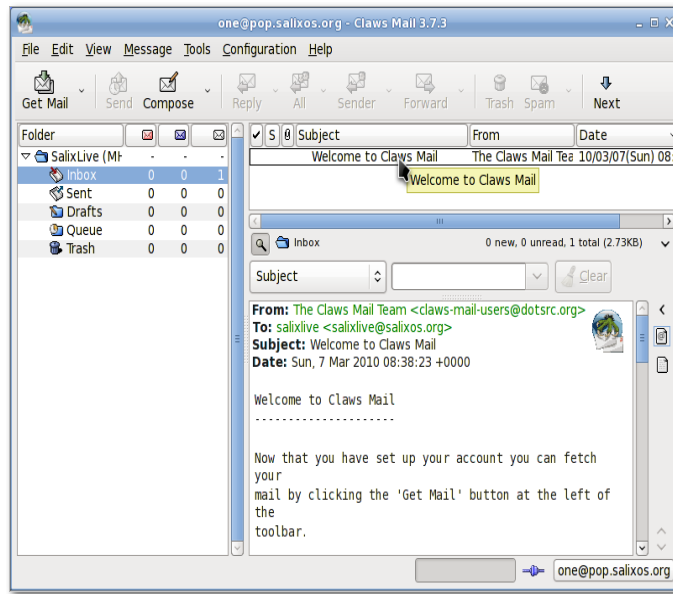
Catfish

Catfish is a handy file searching tool which provides a unified, lightweight and simple interface for different search engines such as find, (s)locate, doodle, tracker and beagle.



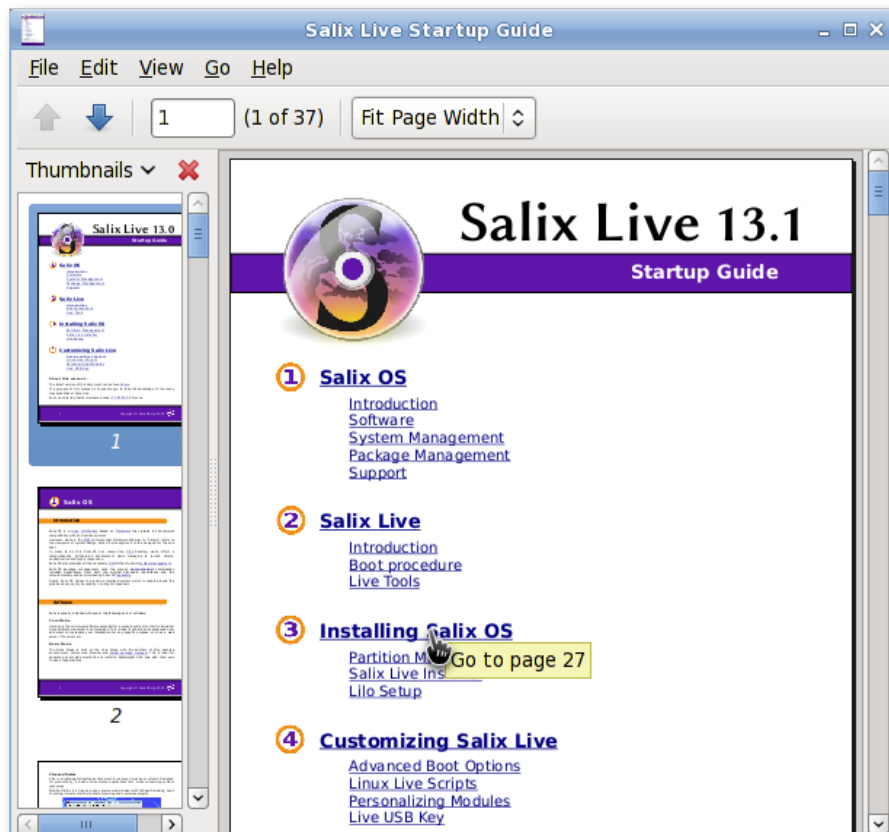
Claws-mail

Claws Mail is an open source email and news client. It offers easy configuration and an abundance of features. It stores mail in the MH mailbox format as well as the Mbox mailbox format via a plugin.



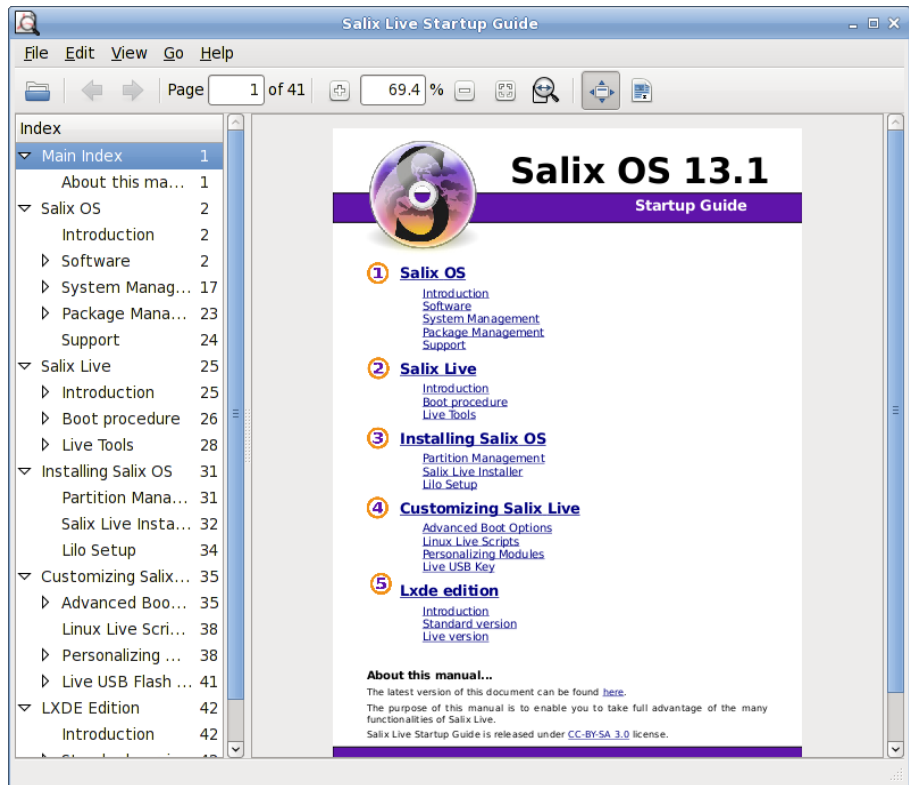
Document Viewer (Evince)

Document Viewer is a a very lightweight, simple PDF document viewer.



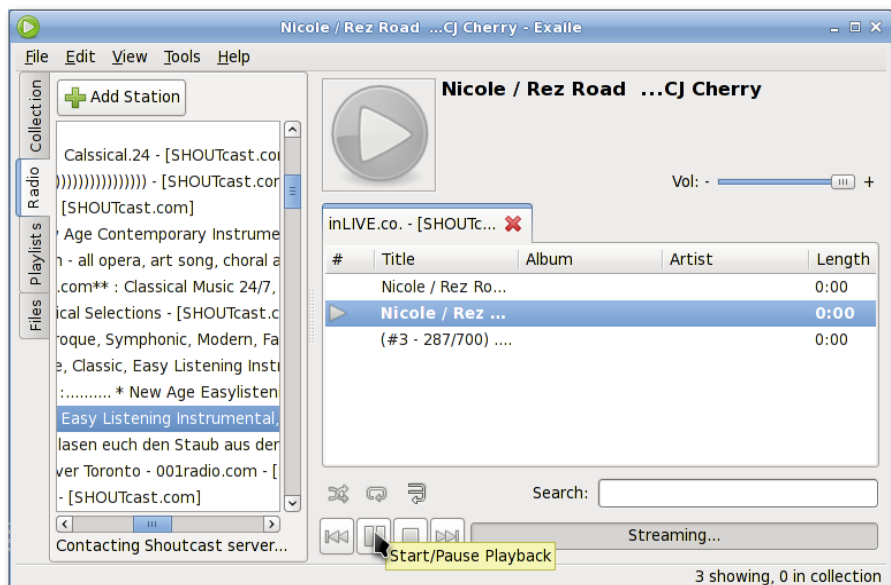
ePDFview

ePDFView is a lightweight PDF document viewer that only uses the GTK+ and Poppler libraries. It opens PDF files, save copies of documents, and has support for printing using CUPS.



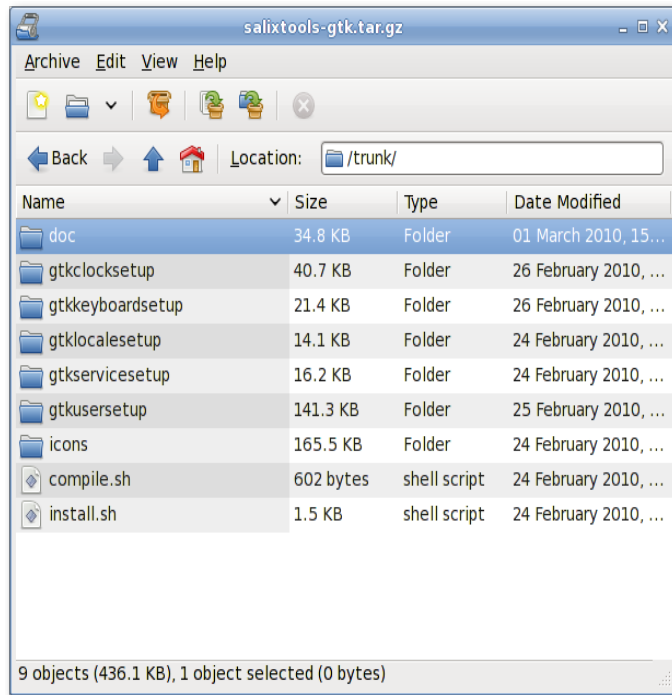
Exaile

Exaile is a music manager which incorporates automatic fetching of album art, lyrics fetching, Last.fm scrobbling, support for many portable media players, Internet radio such as Shoutcast, tabbed playlists, etc.



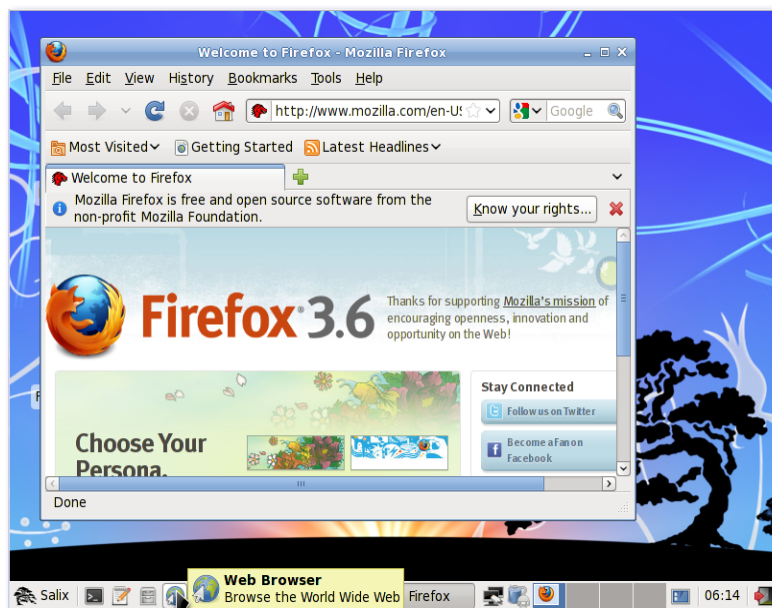
File Roller

File Roller is an archive manager. Supported archive types include gzip, bzip, bzip2, compress, lzop, zip, jar, lha, rar, zoo, arj, 7-zip, etc.



Firefox

Mozilla Firefox is a free and open source web browser with tabbed browsing, spell checking, incremental find, private browsing and numerous plugins.

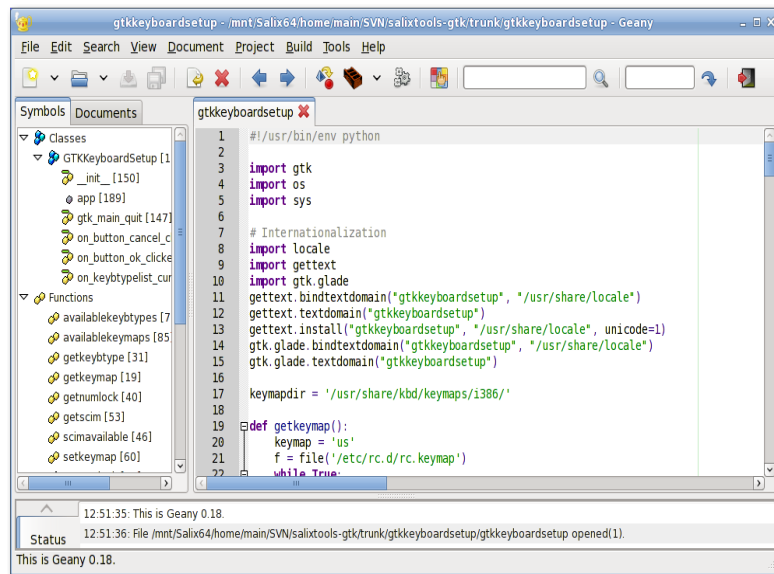


Calculator

Calculator is a calculator featuring two user modes: basic and scientific mode. Basic mode is intended for simple computations while Scientific Mode is Galculator's state-of-the-art.

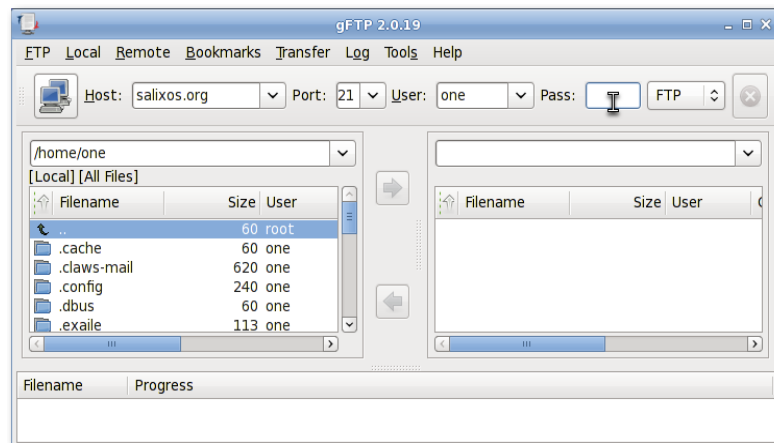
Geany

Geany is a small and lightweight Integrated Development Environment which only has a few dependencies and is independent of any particular Desktop Environment.



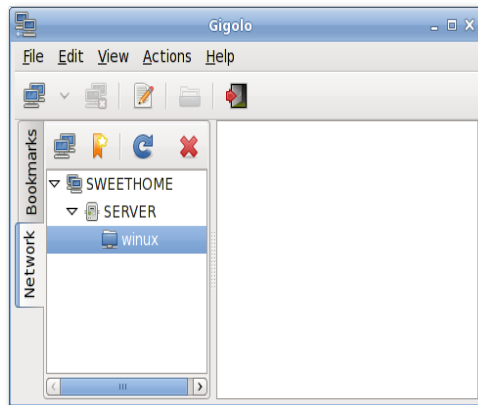
gFTP

gFTP is an FTP client with both a text and a GUI interface. gFTP aims to be simple to use yet powerful.



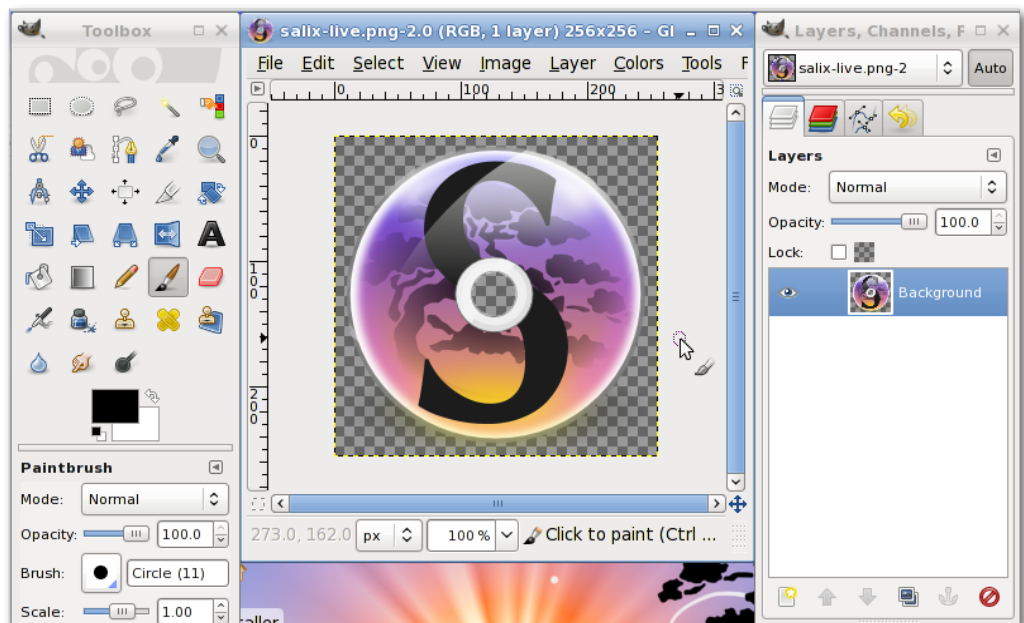
Gigolo

Gigolo is a frontend to easily manage connections to remote filesystems using GIO/GVfs. It allows you to quickly connect/mount a remote filesystem and browse local networks shares.



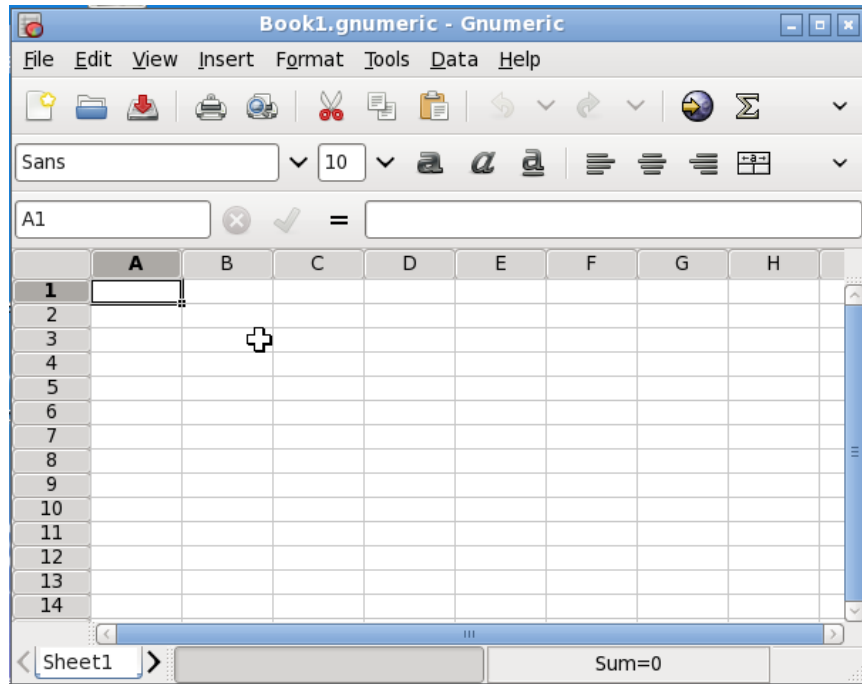
Gimp

GIMP (GNU Image Manipulation Program) is an image retouching and editing tool. In addition to offering free-form drawing, it can accomplish essential image workflow steps such as resizing, editing, and cropping photos, combining multiple images, converting between different image formats as well as create basic animated images in GIF.



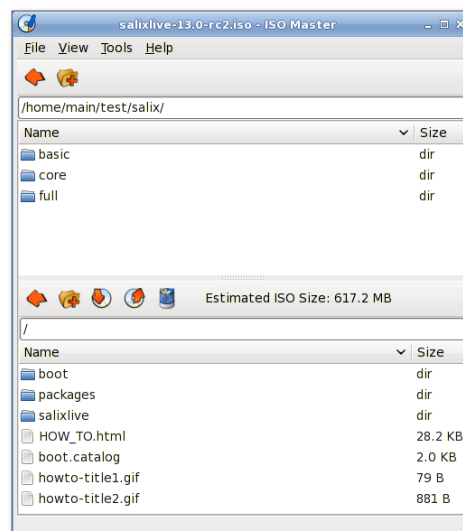
Gnumeric

The goal of Gnumeric is to be the best possible spreadsheet. While not attempting to clone existing applications, Gnumeric can however read files saved with other spreadsheets and offers a customizable feel that attempts to minimize the costs of transition.



ISO Master

ISO Master is an application for creating and modifying ISO9660 files (ISO images). Its functionalities include: creating an ISO image from scratch, adding or removing files and directories to/from a CD image, and creating bootable CDs using various boot record types.



Leafpad

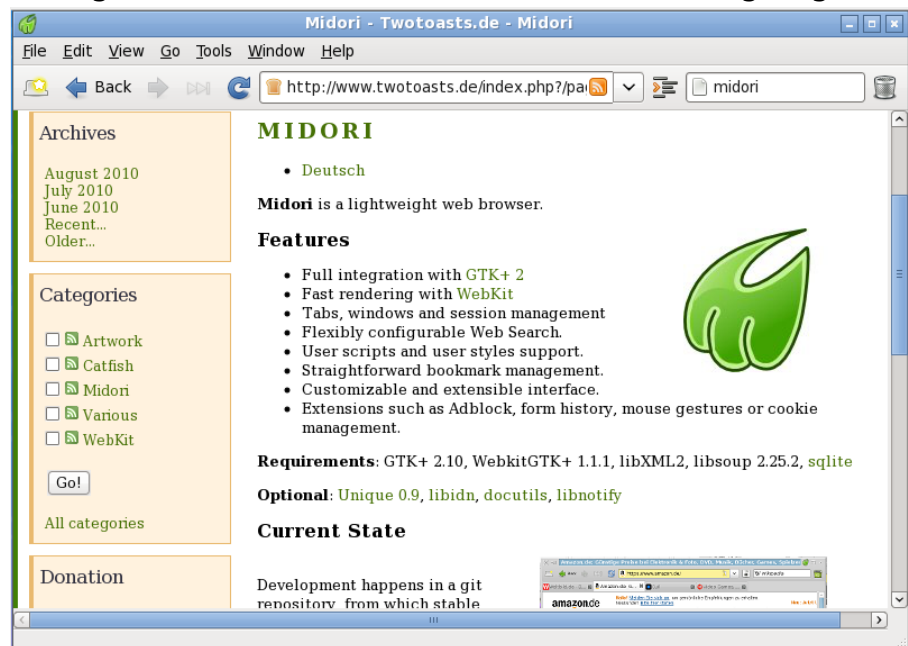
Leafpad is a very light simple text editor with printing support.

Meld

Meld is a visual diff and merge tool. You can compare two or three files and edit them in place (diffs update dynamically). You can compare two or three folders and launch file comparisons. You can browse and view a working copy from popular version control systems such as CVS, Subversion, Bazaar-ng and Mercurial.

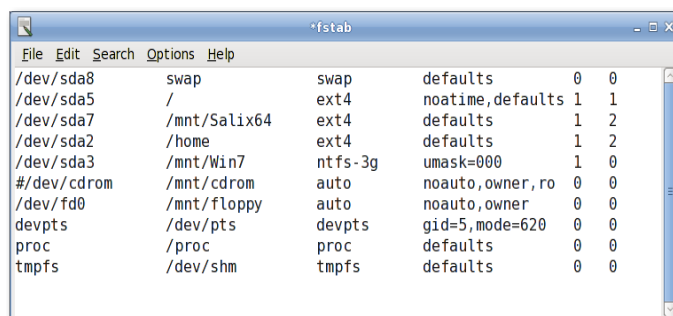
Midori

Midori (Japanese for green) is a web browser that aims to be lightweight and fast. It uses the WebKit rendering engine.



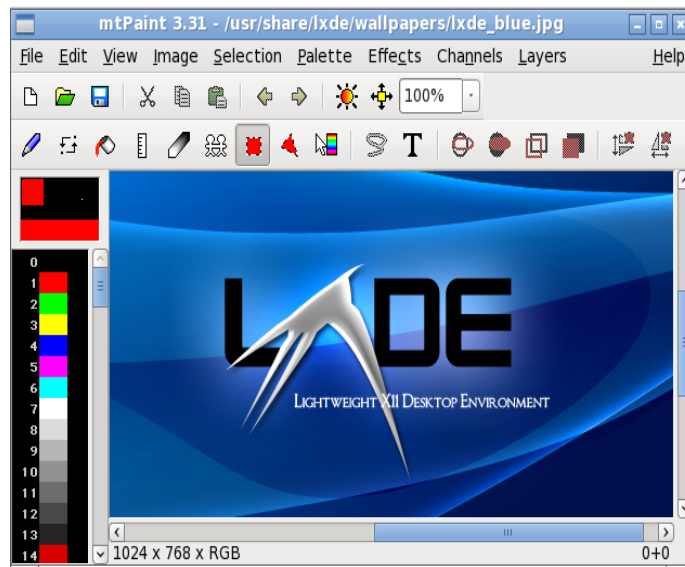
Mousepad

Mousepad is a simple text editor with printing support.



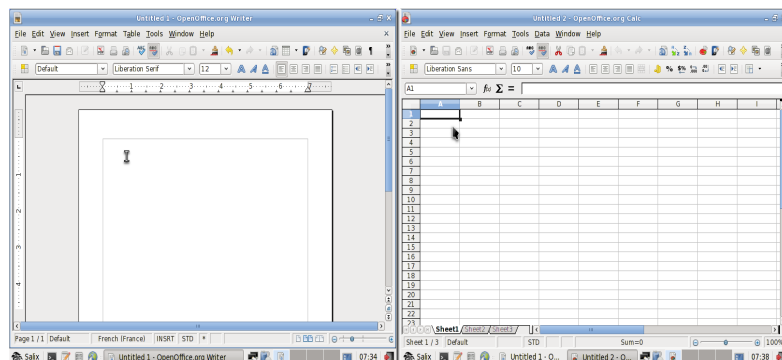
mtPaint

mtPaint is a painting program designed to easily create pixel art and manipulate digital photos. Due to its efficient design it can run on older PC hardware (e.g. a 200MHz CPU and 16MB of free RAM).



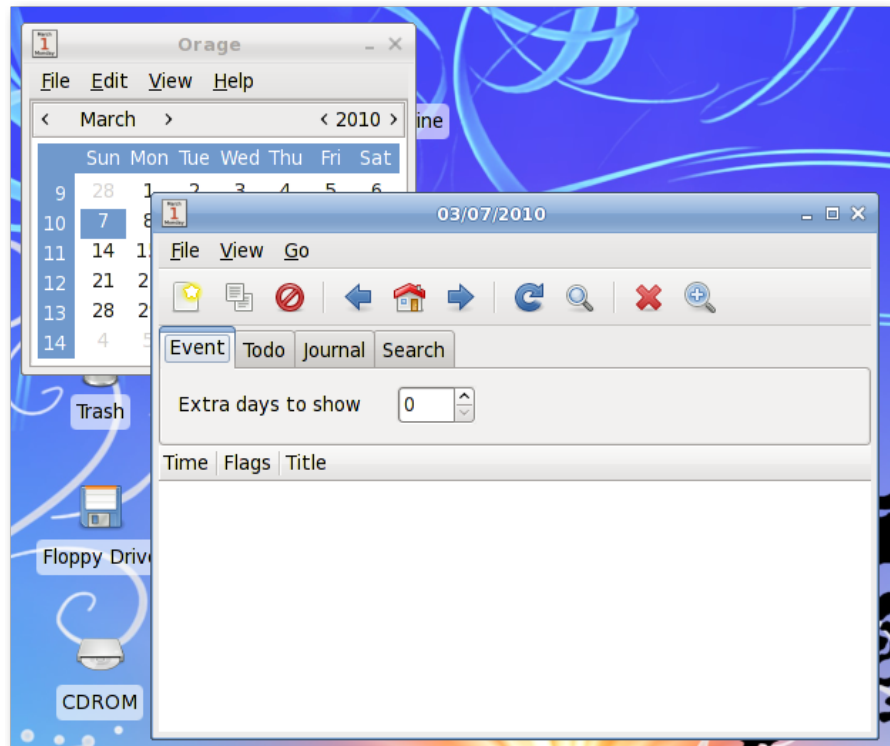
OpenOffice.Org

OpenOffice.org is the leading open-source office software suite for word processing, spreadsheets, presentations, graphics, databases and more. It is available in many languages and works on all common computers. It stores all your data in an international open standard format and can also read and write files from other common office software packages.



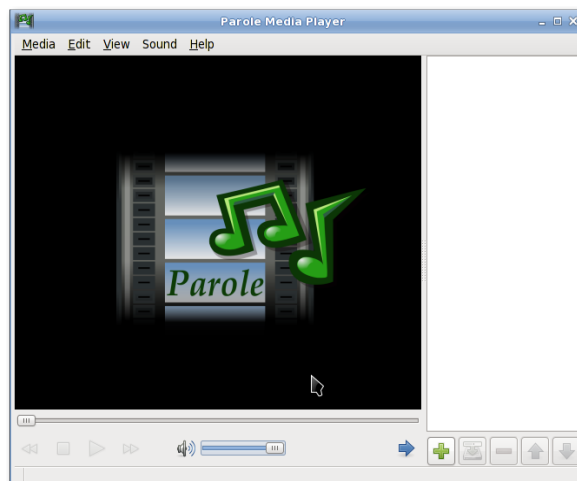
Orage

Orage provides a calendar which integrates nicely into the Xfce Desktop Environment. It is highly configurable and supports alerts based on dates. It warns you with pop-up or audible alarms. As it is an application for everyday use, it launches itself in the background and can be accessed using the Orage Clock plugin for the panel. Simply click on a date to display or set the agenda for the day.



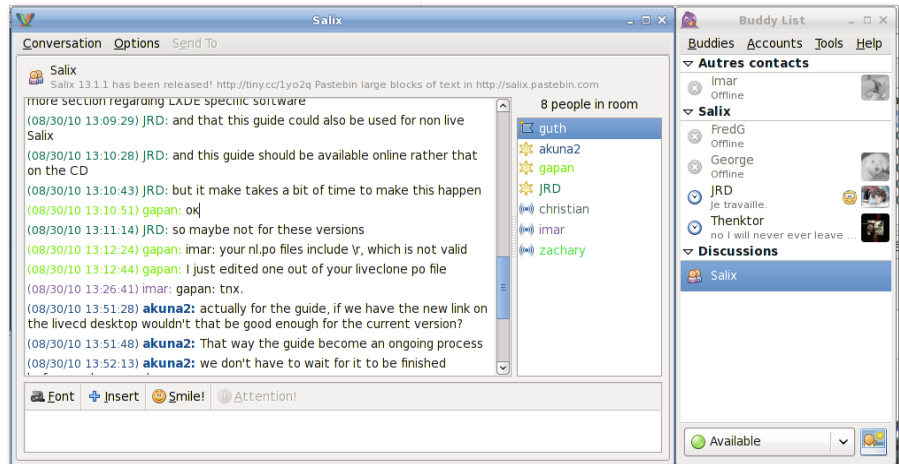
Parole Media Player

Parole Media Player is a media player (audio and video) which utilises the GStreamer framework for playback.



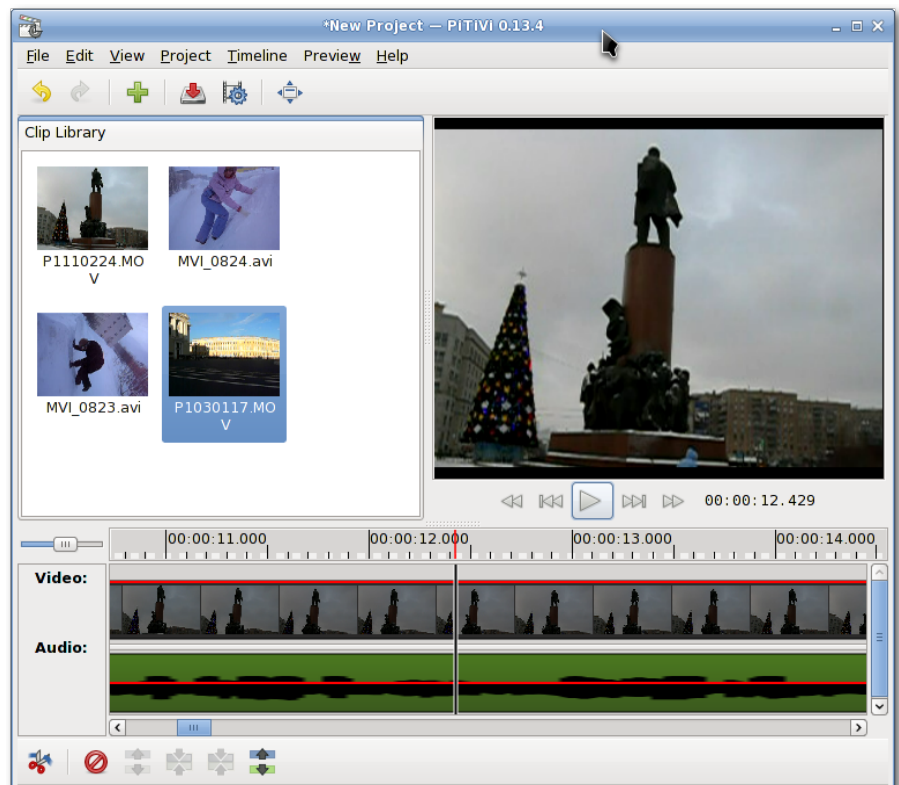
Pidgin

Pidgin is an easy to use and free chat client which lets you log in to accounts on multiple chat networks simultaneously. Pidgin is compatible with numerous chat networks out of the box: AIM, ICQ, Google Talk, Jabber/XMPP, MSN Messenger, Yahoo, etc.



PiTiVi Video Editor

PiTiVi is an easy to use video editor. The interface is intuitive to most users. Just by dragging your video clips, you can create your own film clips.

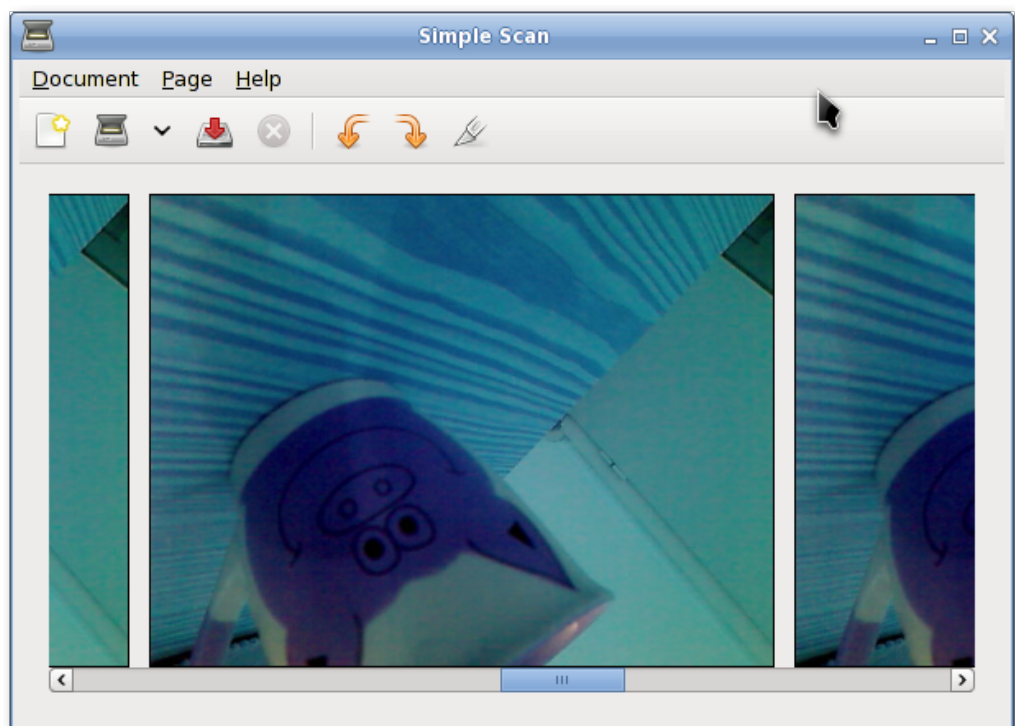


SCIM

The Smart Common Input Method platform (SCIM) is an X input method (XIM) platform containing support for more than thirty languages (Chinese, Japanese, Korean and many European languages).

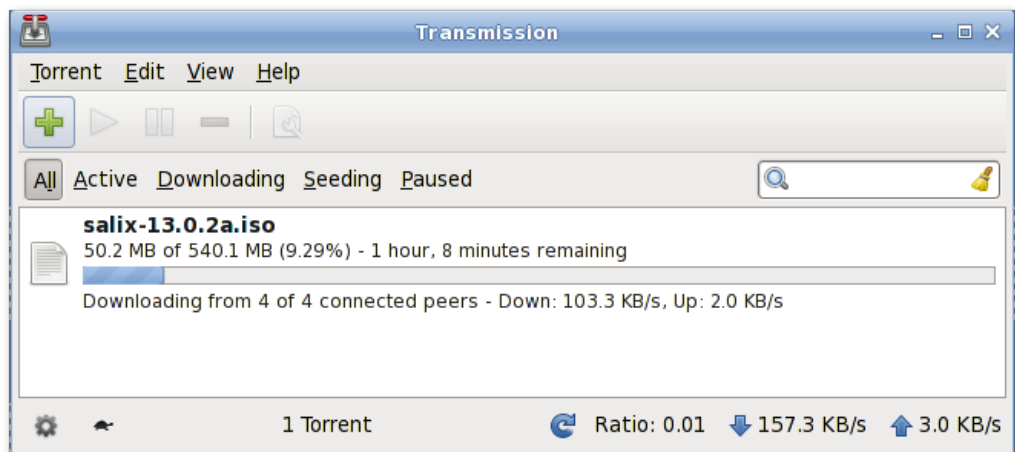
Simple Scan

Simple Scan allows you to scan your documents/photos with your scanner or even with your webcam!



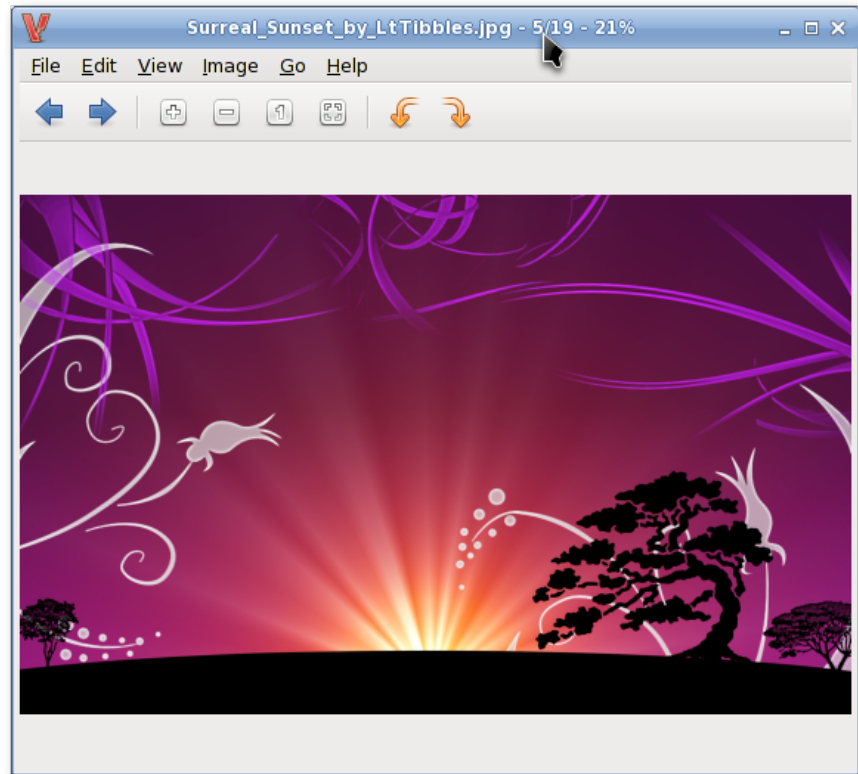
Transmission

Transmission is a [BitTorrent](#) client that is simple, lean and powerful.



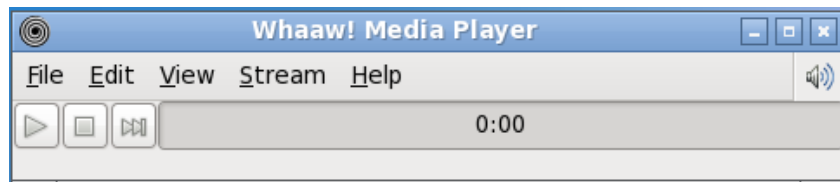
Viewnior

Viewnior is a fast and lightweight picture viewer.



Whaaw! MediaPlayer

Whaaw! Media Player will play any audio/video files which GStreamer can manage. It supports fullscreen mode, seeking, changing video colour settings and more. It is intended to be a basic media player with few dependencies.



Zim

Zim is a bit of everything. In essence, it is a desktop wiki, and it allows you a great deal of flexibility regarding what you can do with it. For instance, one can use it to keep track of TODO lists of ideas, to take notes in a meeting, as a drafting tool for blog entries, mails and so on.